



FINEPRINT^{co}®

Limited Edition | Artist Edition | Photographic Edition | Open Edition

Kathrin Longhurst

Limited Edition prints available now

Kathrin's passion for exploring the concepts of freedom of speech and expression, concepts that continue to thread through her work today.'

Brand New
Open Edition
Print Collection

The
2019 Colour
Collection

FINEPRINT^{co}®

Limited Edition | Artist Edition | Photographic Edition | Open Edition

The 2019 Colour Collection

Front Cover image:
Crossroads **Kathrin Longhurst**
#LE-KL-001 LIMITED EDITION OF 20

View Kathrin's Limited Edition print
collection on Page 30.




 POOL AT AMALFI COAST

SLIM AARONS

#77442051

Director's Statement

FINEPRINT co is the youngest division of Gold Coasts' very own Corporate Art and Gallery One. It is yet another exemplary avenue within the art, design and printing industries that we are proud to have raised as it continues to evolve. Retaining our 30 years' of proficiency, it comes as no surprise that FINEPRINT co forms and embraces impressive partnerships with globally-renowned enterprises. FINEPRINT co has the Exclusive Rights to Getty Images Archive, including renowned photographer Slim Aarons, in Australia and New Zealand and works hand in hand with our two Australian-based supporting agencies, Brave Agencies in Brisbane, QLD and Berkeley Nest Agencies in Adelaide, SA.

FINEPRINT co continues to provide unparalleled original artwork, iconic prints, framing services, bespoke projects and interior design elements to International and Australian based clients, including hotels & resorts, aged care facilities and our expansive database of Retail, Trade and Wholesale Accounts.

We have the pleasure of kindling relationships with some of Australia's most acclaimed artists, including 2019's Featured Artist; Kathrin Longhurst.

Raised in East Germany behind the Berlin wall, Longhurst grew up amidst communist propaganda and socialist ideology. Longhurst reconsidered war propaganda aesthetics with 'flying' female warriors, in place of fearsome male figures of power.

FINEPRINT co's 2019 catalogue is a plethora of unique imagery representative of the years' movements and trends within the field of art and design, however, previous catalogues are still available upon request.

FINEPRINT co offers premium quality photographic prints from the Slim Aarons Archive, owned and housed by Getty Images. All photographs are printed from the original negative in London and come with a Certificate of Authenticity authorised by the Getty Images Gallery.

From the FINEPRINT co team to you, we would like to personally thank you for your ongoing support and we look forward to our upcoming advances and future endeavours together.

Leanne Pearce

Printing

At FINEPRINT co we provide fine art print services for all image-makers: photographers, artists working in photo media, illustrators, printmakers, design studios, students, graphic designers and enthusiasts.

The studio is comprised of the latest generation of pigmented ink printers – Epson's Surecolor 20700 64" and alongside that is our solvent inkjet Epson S70600 64". The team working in the print studio have a strong background in fine art imaging, having worked in the field for over a decade.

Framing

Our master framers have a combined 60 years of framing experience along with offering over 100 bespoke framing options. Using premium frame mouldings our team combined with state of the art framing equipment consistently deliver the highest quality frames available.

Logistics

We offer shipping and logistical management of our products all across Australia. Our team will consider your artworks' unique features, needs and foresee any installation challenges. We are skilled and experienced in the installation of two-dimensional works right through to large sculptures.

Customer Service

Our team has developed a well-earned reputation for their professionalism, technical expertise and calmness whilst faced with the most challenging and demanding installation projects. We do everything we can in order to maintain relationships with clients and ensure that you are happy with the final delivered product.

Consultancy

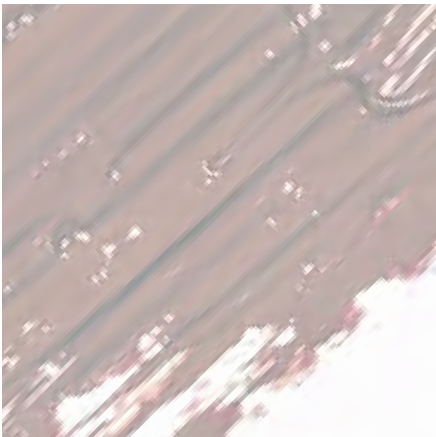
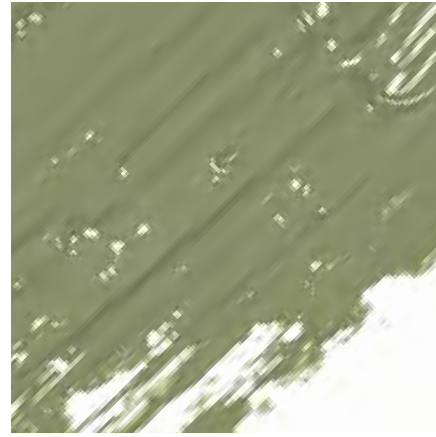
With consultants that have worked on multi-million dollar projects, we can guarantee that we can service any project necessary. FINEPRINT co has developed relationships with project managers, interior designers and architects that understand the importance of artworks, strict briefs, budgets and timelines.

Wholesale/Trade Program

FINEPRINT co offers Wholesale & Trade Accounts for stores, interiors designers and stylists throughout Australia and New Zealand. We love to work with industry professionals who are passionate and love to experience unique collections of quality art and photography. FINEPRINT co offers discounted prices for our prints and framing for both our Wholesale and Trade accounts.

- Expert art consultancy services
- Tiered Trade and Wholesale Discounts
- Discounts on large quantity orders
- Custom sizing, material and bespoke options
- Artwork commissions by represented artists
- Domestic and International logistic services
- Graphic Design department to support Interior Designers and their projects

For more information, please direct all enquiries for Projects, Wholesale and Trade Accounts to info@fineprintco.com or by calling +61 7 5576 8888.



2019 Colour trends of the year

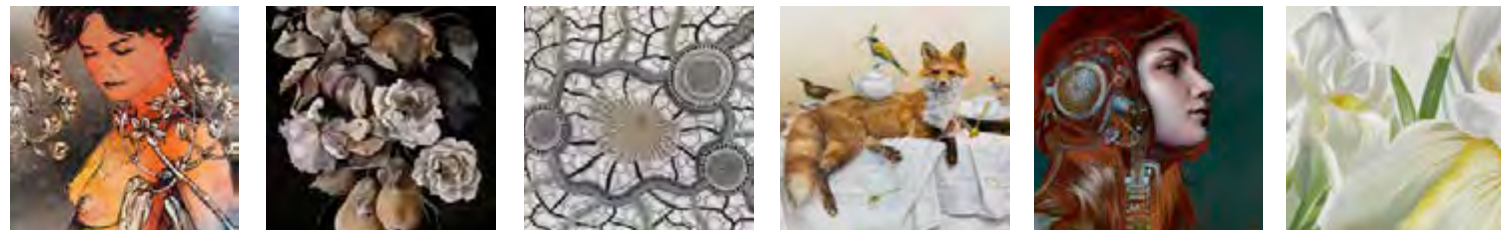
When it comes to 2019's predicted potential colours of focus, the primary palette is of emerald or forest greens accompanied by a variety of beiges, rattans and chalks. Secondary colours are of steel blues and modest sandstones with accents of bold jewel tones and coral pinks.

In terms of interior designs and advertising layouts, the minimalism seen in 2018 will remain, however hints of statement furniture and maximalist artwork or decor are expected to be granted an introduction.

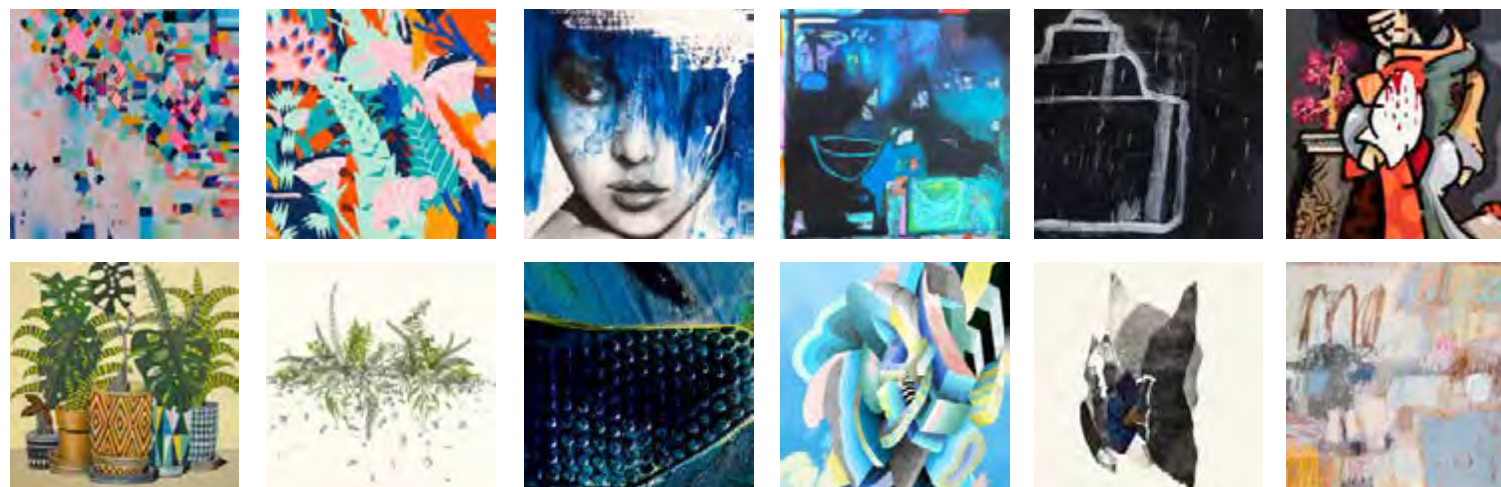
The inspiration behind this years' movements derives from humanities' willingness to rekindle its relationship with the natural elements; a small yet promising step toward a creative, generous and connected society.

3	DIRECTORS STATEMENT
4	SERVICES
5	2019 COLOUR TRENDS

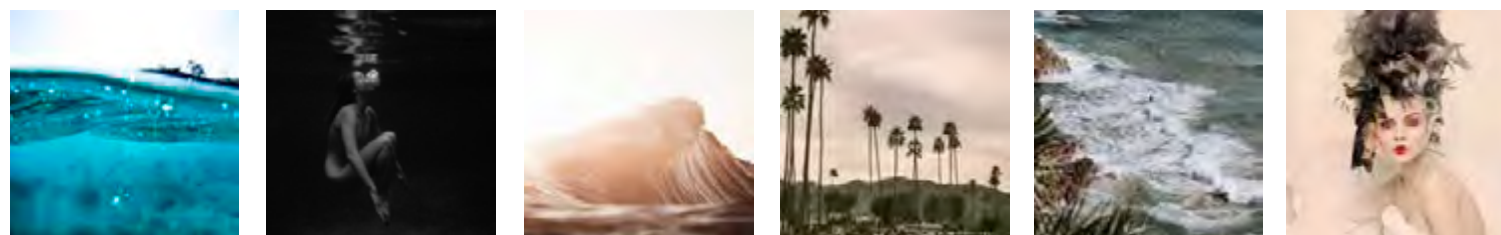
8	LIMITED EDITION
8	DAVID BROMLEY
14	DIANA WATSON
18	GOOMPI UGERABAH
24	JULI HUTCHINGS
26	KATE BERGIN
30	KATHRIN LONGHURST
34	STEPHANIE TETU



40	ARTIST EDITION
40	ALICIA BEECH
44	ANDREW DENNIS
46	CORBAN RENOUF
48	DAN MASON
54	JO OLIVE
60	JOHN KAYE
62	JOHN SANTUCCI
64	KATRINA READ
68	LARA TIMIREVA
74	LEANS
76	MARILYN WALLACE-MITCHELL
84	PAMELA HONEYFIELD



86	PHOTOGRAPHIC EDITION
86	FRAN MILLER
90	FRANCESCA OWEN
96	KYLE JENKINSON
100	SEAN & KAT
104	TRENT SZMOLNIK
110	TRUNK ARCHIVE



122	OPEN EDITION
122	THE PINK COLLECTION
142	THE BLUSH COLLECTION
144	THE ULTRA VIOLET COLLECTION
150	THE MOODY BLUE COLLECTION
156	THE COBALT COLLECTION
162	THE SKY COLLECTION
182	THE AQUA COLLECTION
186	THE LIME COLLECTION
190	THE FOREST COLLECTION
194	THE SAGE COLLECTION
200	THE NEUTRAL COLLECTION
208	THE TERRACOTTA COLLECTION
218	THE MONOCHROME COLLECTION



224	GALLERY ONE
225	CORPORATE ART

MALLORY
DAVID BROMLEY ►
#LE-DB-002 LIMITED EDITION OF 50

Image Size: 800 × 1000mm
Framed size: 1026 × 1265mm

Limited Edition Print Collection

FINEPRINT co is proud to represent, support and work unitedly with several of Australia's extremely talented and renowned artists. We do so through cooperating with these artists, learning of their stories and embracing the process of how their artworks came to be. The Limited Edition collection gives our customers the chance to purchase a signed and numbered print of our artists' works with an enclosing white matt-board and frame, printed on the elite Hahnemuhle German Etching paper (310gsm) or Ilford's Textured Cotton Rag (310 gsm). Each Limited Edition print is accompanied by a Certificate of Authenticity.




 NEW
RELEASE

David Bromley

Limited Edition

fine art prints



CHARLOTTE WITH FLOWERS

DAVID BROMLEY

#LE-DB-017 LIMITED EDITION OF 50

Image Size: 800 × 800mm

Framed size: 1020 × 1020mm

Born in 1960 in Sheffield, England, David Bromley immigrated to Australia with his family in 1964 and emerged as a painter in the mid 1980s. Since then, he has become one of the most recognisable and innovative artists in Australia. Over the past 20 years David's work has fostered widespread acclaim and notoriety in Australia and internationally. He has exhibited on nearly every continent including Asia, Europe, Africa and America.

In his practice, David has developed distinct themes and unique styles of painting; his best known are the nude female portraits and children's series, but he often explores with various mediums and imagery that portray a certain whimsy. However diverse in his subject matter, David's work is enduringly figurative, daringly coloured and executed with a graphic intention that is striking and memorable.

David's practice has extended to significant work in sculpture, creating in both bronze and resin to bring to life the characters imbued within his paintings.



NUDE WITH FLOWERS

DAVID BROMLEY

#NUDEWITHFLOWERS LIMITED EDITION OF 50

Image Size: 850 × 1000mm
Framed size: 1130 × 1265mm

LIMITED NUMBERS REMAINING



ZIPPORA

DAVID BROMLEY

#ZIPPORA LIMITED EDITION OF 50

Image Size: 830 × 1000mm
Framed size: 1084 × 1265mm

LIMITED NUMBERS REMAINING



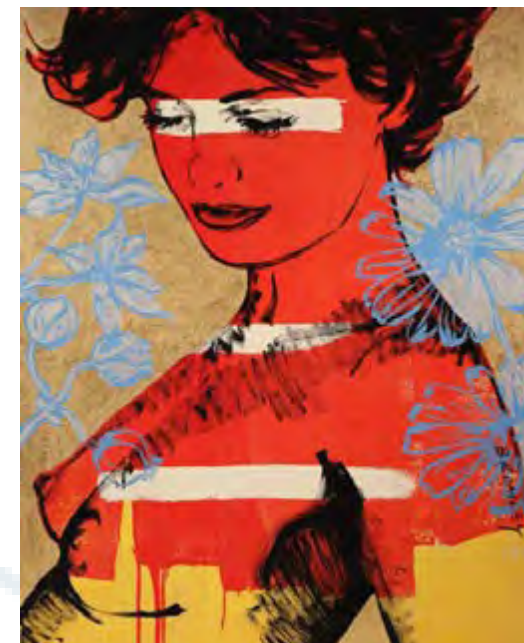
FLURO BOYS IN BOAT
DAVID BROMLEY
 #FLUROBOYSINBOAT LIMITED EDITION OF 50

Image Size: 760 × 1000mm
 Framed size: 1025 × 1265mm



LACQUERED BUTTERFLIES
DAVID BROMLEY
 #LAQUEREDBUTTERFLIES LIMITED EDITION OF 50

Image Size: 1000 × 760mm
 Framed size: 1265 × 1025mm



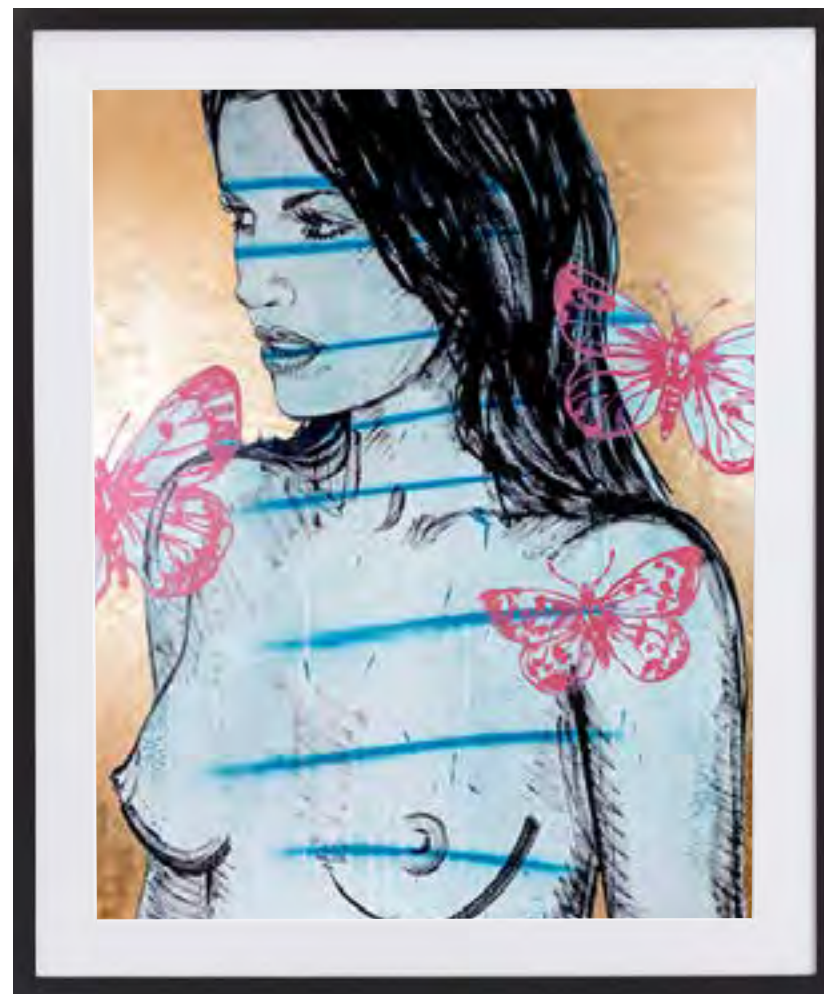
CHARLOTTE WITH BLUE FLOWERS
DAVID BROMLEY
 #LE-DB-001 LIMITED EDITION OF 50

Image Size: 808 × 1000mm
 Framed size: 1075 × 1265mm



BELINDA
DAVID BROMLEY
#LE-DB-004 LIMITED EDITION OF 50

Image Size: 800 × 995mm
Framed size: 1025 × 1220mm



CHELSEA
DAVID BROMLEY
#LE-DB-006 LIMITED EDITION OF 50

Image Size: 800 × 995mm
Framed size: 1025 × 1220mm



MALLORY 2
DAVID BROMLEY
#LE-DB-003 LIMITED EDITION OF 50

Image Size: 560 × 850mm
Framed size: 785 × 1075mm



GILLIAN
DAVID BROMLEY
#LE-DB-005 LIMITED EDITION OF 50

Image Size: 560 × 850mm
Framed size: 785 × 1075mm



PUGLIA
DIANA WATSON
#LE-DW-004 LIMITED EDITION OF 20

Image Size: 1000 × 772mm
Framed size: 972 × 1210mm



LIGURIA
DIANA WATSON
 #LE-DW-003 LIMITED EDITION OF 20

Image Size: 880 × 880mm
 Framed size: 1080 × 1090mm

Diana Watson *Limited Edition* *prints of 20*

As an only child, Watson was happy in her own company growing up and spent endless hours drawing, painting, learning to sew and making tiny sculptures. "I am driven to paint, to work or to create something that has meaning" she says. "Being creative is who I am."

That childhood creativity led to an art education under eminent West Australian artist Robert Juniper. Watson then launched her own art career after working for several years in fashion. "I had a boutique that provided a wonderful necessity to travel to Italy regularly," she says. "This was a major influence on the painting I am doing now."

That painting comprises exquisitely melancholic still life ruminations on nature, flowers, death and renewal. Evoking a sense of romance and abundance akin to the early masters, Watson's paintings have made her one of Australia's most popular still-life artists with numerous exhibitions to her name and work in private collections in the UK, Italy, Germany, Dubai and America.

"I capture and record the fleeting beauty of everyday life," she says. "There is a need to share this beauty in a world that is not without its foreboding. My hope is this imagery provides the viewer with a sense of hope and peacefulness."



ARBORIUM
DIANA WATSON
#LE-DW-008 LIMITED EDITION OF 20

Image Size: 792 × 1000mm
Framed size: 1012 × 1220mm



ALBA ROSA
DIANA WATSON
#LE-DW-009 LIMITED EDITION OF 20

Image Size: 1000 × 797mm
Framed size: 1220 × 1017mm



SORRENTO
DIANA WATSON
#LE-DW-006 LIMITED EDITION OF 20

Image Size: 772 × 1000mm
Framed size: 972 × 1210mm



CAPRI
DIANA WATSON
#LE-DW-007 LIMITED EDITION OF 20

Image Size: 772 × 1000mm
Framed size: 972 × 1210mm

Goompi 'Bora Rings' Limited Edition print of 10

"Bora rings (initiation circles) The 3 cleared ring-shaped areas were used for ceremonies. One for boys to become men. One for girls to become women. And the third for special gatherings, marriage ceremonies and other reasons.

A lot of this is sacred and detail cannot be spoken about. And the men and women ceremonies were strictly not to be discussed with the opposite sex. The ceremonies instilled knowledge, power and spirit into our people and this shaped who we were and are as a people." – Goompi Ugerabah

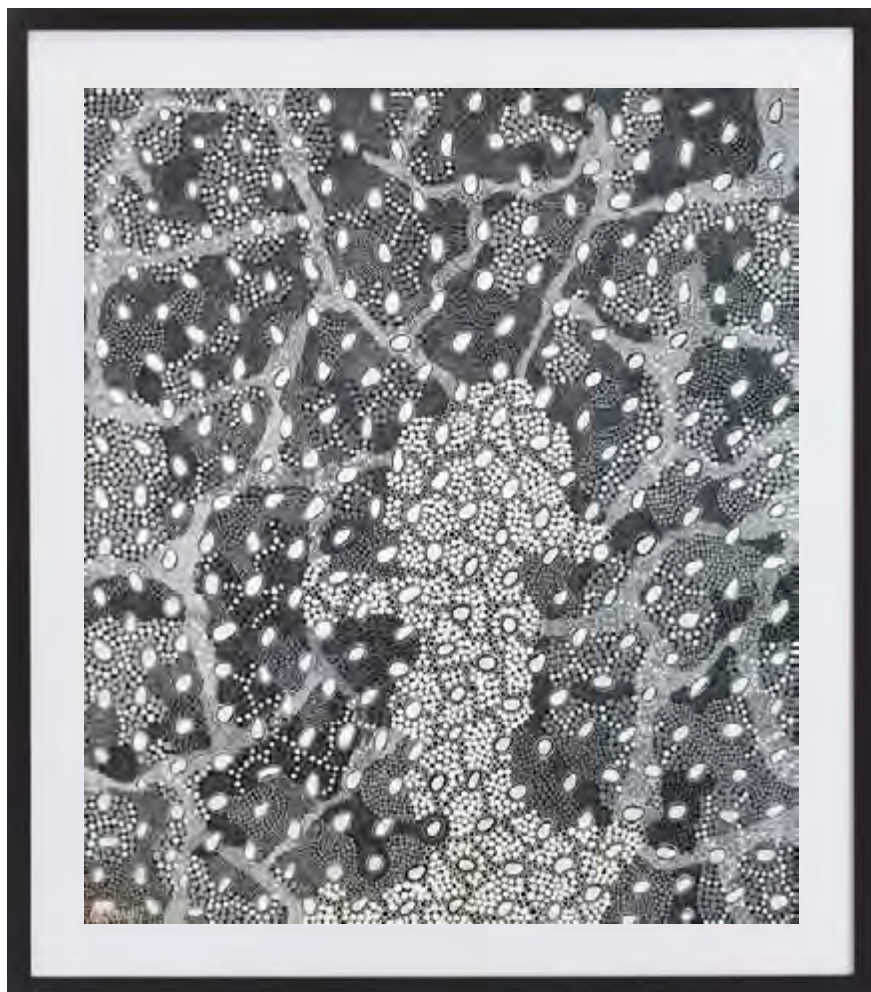


BORA RINGS
GOOMPI UGERABAH
#LE-GU-006 LIMITED EDITION OF 10

Image Size: 1000 × 776mm
Framed size: 1240 × 1030mm







KINGINGYARRA
GOOMPI UGERABAH
 #LE-GU-001 LIMITED EDITION OF 20

Image Size: 883 × 1000mm
 Framed size: 1109 × 1226mm

LIMITED NUMBERS REMAINING



TRIBAL CEREMONIES
GOOMPI UGERABAH
 #TRIBALCEREMONIES LIMITED EDITION OF 20

Image Size: 760 × 1000mm
 Framed size: 986 × 1226mm

LIMITED NUMBERS REMAINING

Goompi Ugerabah

Goompi is a proud tribal man whose ancestors are originally from Gurreng Gurreng people near Maryborough QLD. After settlement his great-great-grandmother was forced to move to the Ngnarangwal tribal area (Gold Coast) and Minjungbal tribal area (Tweed Heads), where Goompi and the last few generations of his family were born and bred. Goompi has been painting since 2002, and shows great talent. Using a restrained colour palette and eye-catching graphic designs, Goompi is able to create exciting and engaging works of art.

His artworks are investment pieces and his black and white style has been tagged as a "corporate style art".

He has exhibited widely in South East Queensland and Northern New South Wales area and now in galleries around the world. Goompi's driving force which he quoted is "I want to do my best to show our culture to the world and also teach our young to keep traditions alive as our culture that our ancestors practiced and lived is who we really are and that gives us our true identity."

GRAND GRAVA
GOOMPI UGERABAH ►
#LE-GU-007 LIMITED EDITION OF 20

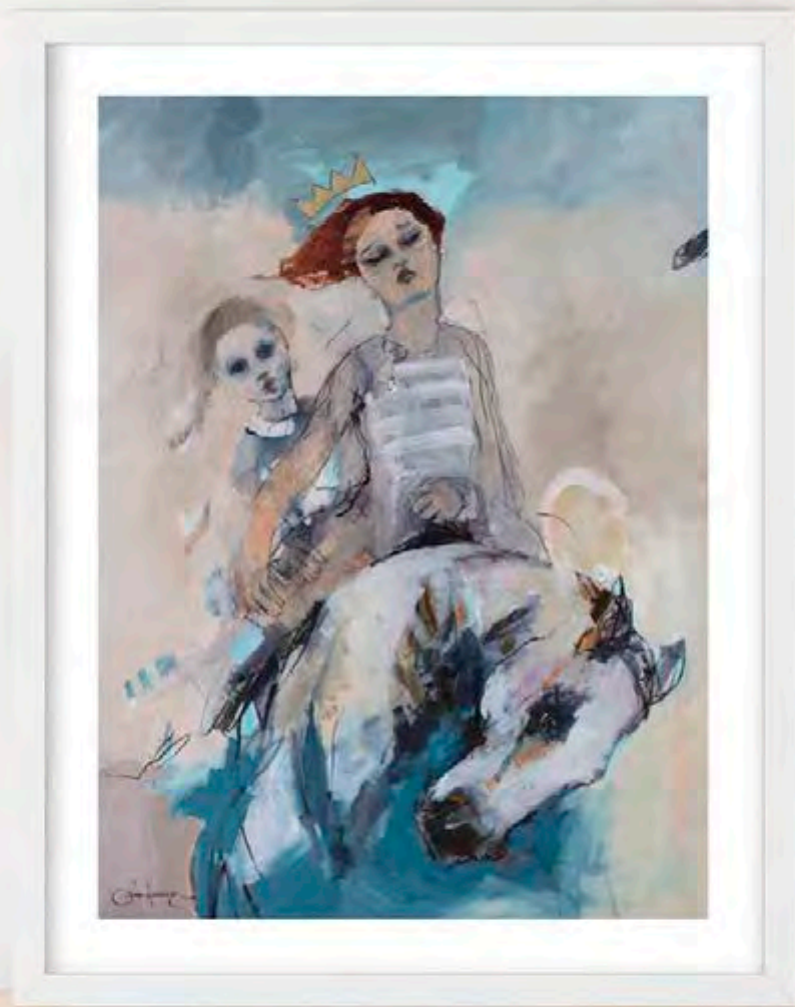
Image Size: 400 × 500mm
Framed size: 590 × 700mm





OCHRES OF MOTHER EARTH
GOOMPI UGERABAH
#LE-GU-008 LIMITED EDITION OF 10

Image Size: 1370 × 760mm
Framed size: 1555 × 985mm



Juli Hutchings *Limited Edition* *prints of 20*

Juli Hutchings was born in 1959 and is now based in Grafton on the Northern Rivers of NSW. Her early career was devoted to horses –working as a strapper and later managing a horse stud. She began studying commercial art in 1988, and has since pursued both interests with equal passion.

Initially working in Graphic Design & feeling restricted creatively she made the transition to the Fine Arts & has been successfully exhibiting her works since.

She is an intuitive artist who paints with tremendous energy & expression. Julie retains the discipline of drawing by organising & attending Life Drawing sessions weekly & the rest of her time is spent in her studio painting.

Horses, racing and jockeys are a significant theme in one strand of her work, while her studies of the human form exhibit the energy and emotion she hopes to bring to her work.

She has exhibited in a number of galleries, and her works are held in private collections in Australia and New Zealand.

◀ **FREEDOM**
JULI HUTCHINGS
#LE-JH-003 LIMITED EDITION OF 20

Image Size: 580 × 690mm
Framed size: 806 × 916mm



SWAN
JULI HUTCHINGS
#LE-JH-001 LIMITED EDITION OF 20

Image Size: 690 × 690mm
Framed size: 916 × 916mm



WHERE YOU GO I WILL FOLLOW
JULI HUTCHINGS
#LE-JH-002 LIMITED EDITION OF 20

Image Size: 690 × 690mm
Framed size: 916 × 916mm

THE THREE GRACES

KATE BERGIN

#LE-KB-005 LIMITED EDITION OF 10

SOLD OUT

Image Size: 1060 × 900mm

Framed size: 1285 × 1125mm



Kate Bergin Limited Edition prints of 10



THE ART OF LIFE

KATE BERGIN

#LE-KB-002 LIMITED EDITION OF 10

Image Size: 1060 × 900mm
Framed size: 1260 × 1125mm

The Variations by Bach however are at play in these fantastically fanciful works. At first glance it is impossible to overlook the vitality of Kate Bergin's compositions. Animals seem poised to leap from the canvas, birds to take flight. And then, little by little, more details emerge: an upturned tea-cup, a pair of spectacles, a tiny revolver and teaspoons – so many teaspoons! – some balanced precariously on tabletop edges, others raised aloft trophy-like and yet more attached to beaks, horns and feet by dainty little pieces of string.

Upon a tabletop draped with a white cloth, Bergin directs her creatures in a playful series of 'tableaux vivants', uniting the feral and the domestic, the everyday and the exotic.

Affectionately describing them as her 'tabletop variations', Bergin explains, 'The Goldberg Variations, JS Bach's celebrated work for harpsichord, is a much-loved and frequent accompaniment to my painting. A series of diverse melodic lines unified by a single bass line and chordal structure, Bach's Goldberg Variations closely reflect my own approach to composition. These tabletop variations transpose the musical form onto the visual plane – the tabletop provides the 'bass line' and the birds, animals and various household objects become the "variations".'



TO EACH HIS OWN WILDERNESS

KATE BERGIN

#LE-KB-006 LIMITED EDITION OF 10

Image Size: 1080 × 900mm
Framed size: 1305 × 1125mm



HUNT FOR A ROOM OF ONE'S OWN

KATE BERGIN

#LE-KB-001 LIMITED EDITION OF 10

Image Size: 1010 × 800mm
Framed size: 1210 × 1025mm

THE SPRING COLLECTION ►
KATE BERGIN
#LE-KB-004 LIMITED EDITION OF 10

Image Size: 900 × 1127mm
Framed size: 1125 × 1350mm



THE NAVIGATOR
KATE BERGIN
#LE-KB-003 LIMITED EDITION OF 10

Image Size: 900 × 1070mm
Framed size: 1125 × 1295mm



CROSSROADS
KATHRIN LONGHURST
#LE-KL-001 LIMITED EDITION OF 20

Image Size: 1000 × 1000mm
Framed size: 1220 × 1220mm



Kathrin Longhurst Limited Edition prints of 20

Kathrin Longhurst was born in communist East Germany. A classically trained figurative painter, she began attending life drawing classes at the age of fourteen. When she was just fifteen, her family escaped from 'behind the iron curtain', relocating to Sweden. This jarring transition from a totalitarian regime to a democracy sparked Kathrin's passion for exploring the concepts of freedom of speech and expression, concepts that continue to thread through her work today.

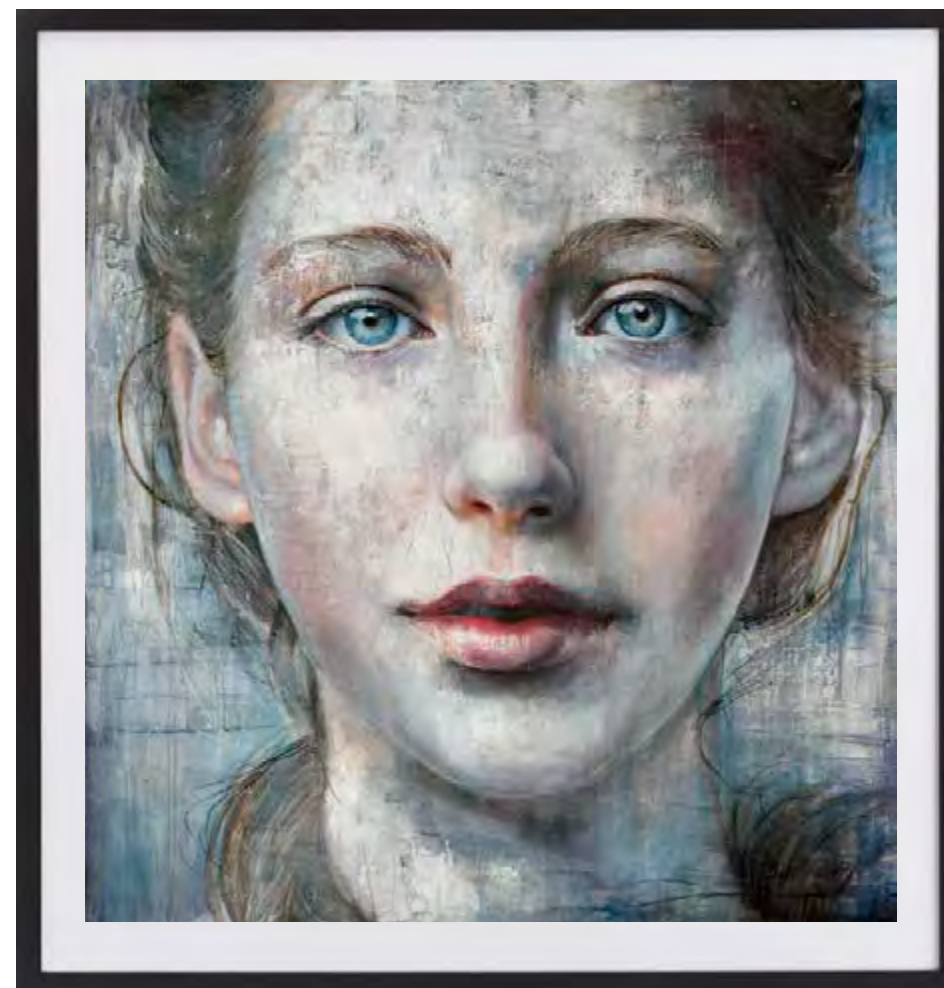
After traveling widely throughout Europe, Asia and America, Kathrin settled in Sydney with her Australian husband. She went on to work prolifically, showing her first solo exhibition in 2004 and becoming well known for her portraits of beautiful, scantily clad women in military attire, draped with symbols of communist propaganda.

Extensive travel provided Kathrin with a unique perspective on the role of women in the media, her more recent works referencing not only communist

propaganda but also the power of advertising in our lives under a capitalist system. Her skillfully rendered subjects layer themes of sexuality and freedom, both seducing and challenging the viewer with their ruby lips, luminous bare skin and confronting gaze.

A well-respected member of the Sydney arts community, Kathrin served as vice president for Portrait Artists Australia for some years and is currently founder and director of the innovative Project 504, an art space that fosters collaboration between emerging and established Australian artists.

Kathrin was recently selected as a finalist in the prestigious 2018 Archibald Portrait Prizes. In 2012 she was selected as a finalist in the Sulman Prize, the Mosman Art Prize, the Portia Geach Award, the Shirley Hannan National Portrait Prize, the Korea Australia Arts Foundation Prize and the WA Black Swan Prize. Her work is collected widely in Australia and internationally.



DRIFTING
KATHRIN LONGHURST
#LE-KL-002 LIMITED EDITION OF 20

Image Size: 1000 × 1000mm
Framed size: 1220 × 1220mm



AWAKEN
KATHRIN LONGHURST
#LE-KL-005 LIMITED EDITION OF 20

Image Size: 1000 × 1000mm
Framed size: 1220 × 1220mm



SHOULD
KATHRIN LONGHURST
#LE-KL-004 LIMITED EDITION OF 20

Image Size: 1000 × 1000mm
Framed size: 1220 × 1220mm

DELIVERANCE
KATHRIN LONGHURST
#LE-KL-003 LIMITED EDITION OF 20

Image Size: 1000 × 1000mm
Framed size: 1220 × 1220mm



TETU
STEPHANIE TETU ►
#LE-ST-010 LIMITED EDITION OF 20

Image Size: 1300 × 675mm
Framed size: 1530 × 910mm

Stephanie Tetu Limited Edition prints of 20

Born 1967. Originally from Montreal in Canada, and now based in Randwick with an art practice in Darlinghurst. Stephanie has worked here and in Canada as a model, a pastry chef and a makeup artist. She is a self taught painter with a number of solo exhibitions and group shows under her belt.

She is currently represented by Piermarq Gallery in Paddington New South Wales and Gallery One in Southport Queensland.

Her thoughtful studies bring the viewer a sense of intimacy and enchantment. Stephanie manages to capture the ephemeral beauty and fragility of flowers and create a sense of drama as well as delicacy, a skill that belies her relatively young career.

"I love painting flowers, they symbolise sex and femininity, the cycles of life. Viewing them in large scale, you can't deny their fleshiness. You discover intimate details revealed in their full splendor."





NEW
RELEASE



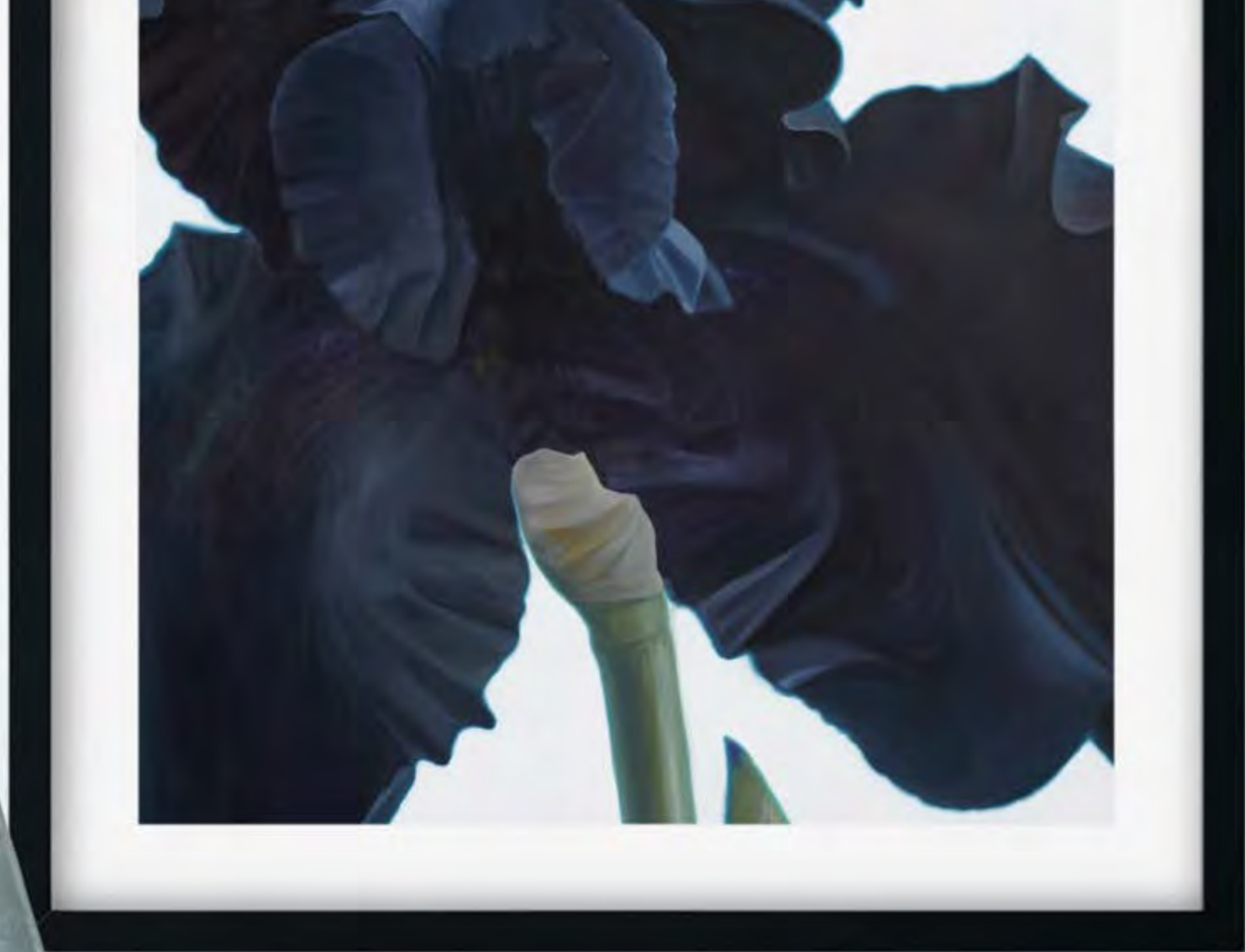
POPCORN 1
STEPHANIE TETU
#LE-ST-011 LIMITED EDITION OF 20

Image Size: 1000 × 1000mm
Framed size: 1265 × 1265mm



POPCORN 2
STEPHANIE TETU
#LE-ST-012 LIMITED EDITION OF 20

Image Size: 1000 × 1000mm
Framed size: 1265 × 1265mm



PORTRAIT / LANDSCAPE SIZES



G Framed Size: 1030mm x 1330mm
Image Size: 1000mm x 1300mm

Only available on Satin Canvas

Satin Photographic Paper (260 GSM) | Cotton Rag Paper (310 GSM)

F Framed Size: 950mm x 1190mm
Image Size: 760mm x 1000mm

E Framed Size: 790mm x 950mm
Image Size: 600mm x 760mm

D Framed Size: 690mm x 790mm
Image Size: 500mm x 600mm

C Framed Size: 590mm x 690mm
Image Size: 400mm x 500mm

Satin Canvas (310 GSM)

F Framed Size: 790mm x 1030mm
Image Size: 760mm x 1000mm

E Framed Size: 630mm x 790mm
Image Size: 600mm x 760mm

D Framed Size: 530mm x 630mm
Image Size: 500mm x 600mm

C Framed Size: 430mm x 530mm
Image Size: 400mm x 500mm

SQUARE SIZES



GS Framed Size: 1030mm x 1030mm
Image Size: 1000mm x 1000mm

Only available on Satin Canvas

Satin Photographic Paper (260 GSM) | Cotton Rag Paper (310 GSM)

FS Framed Size: 950mm x 950mm
Image Size: 760mm x 760mm

ES Framed Size: 790mm x 790mm
Image Size: 600mm x 600mm

DS Framed Size: 690mm x 690mm
Image Size: 500mm x 500mm

CS Framed Size: 590mm x 590mm
Image Size: 400mm x 400mm

Satin Canvas (310 GSM)

FS Framed Size: 790mm x 790mm
Image Size: 760mm x 760mm

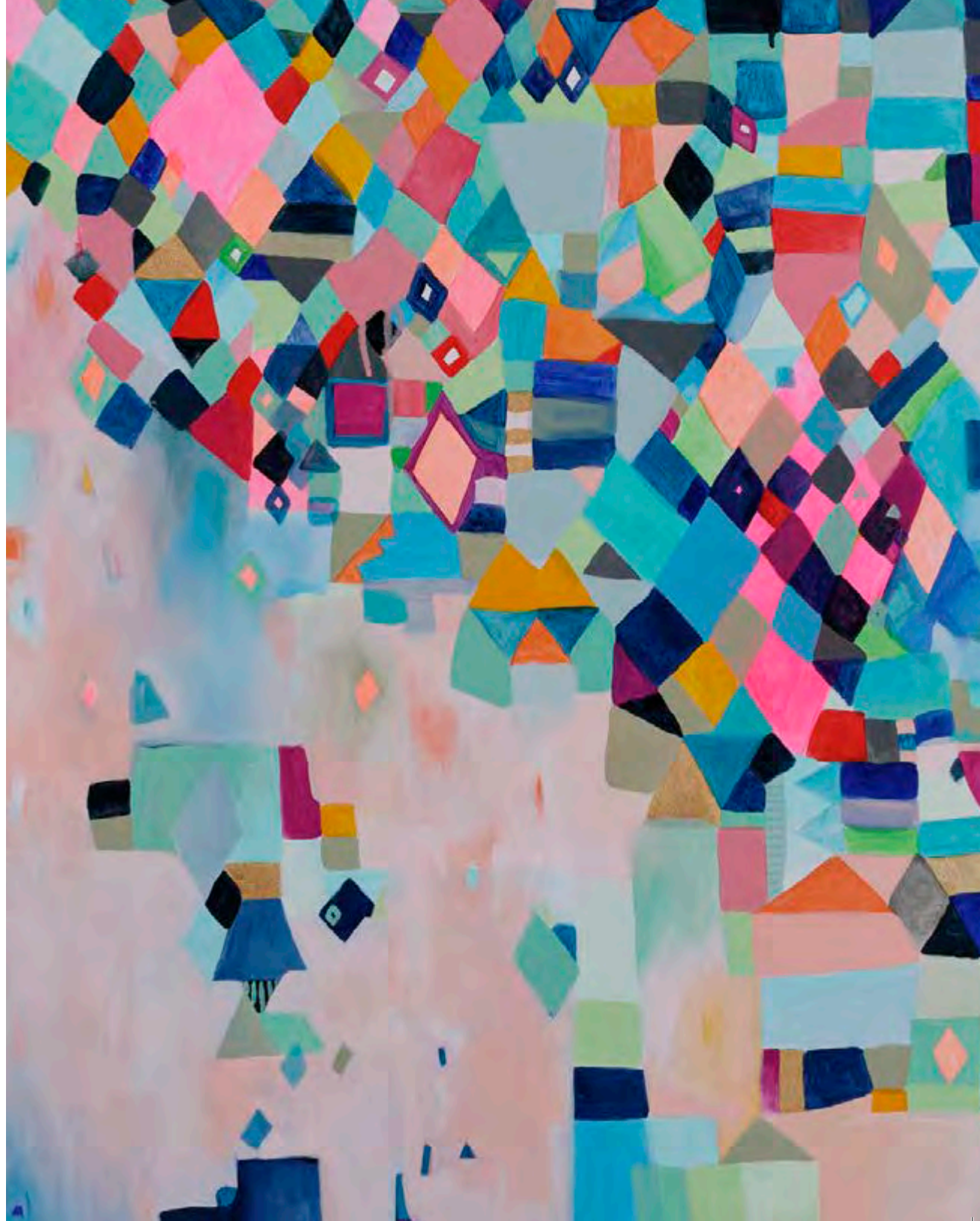
ES Framed Size: 630mm x 630mm
Image Size: 600mm x 600mm

DS Framed Size: 530mm x 530mm
Image Size: 500mm x 500mm

CS Framed Size: 430mm x 430mm
Image Size: 400mm x 400mm

Artist Edition Print Collection

FINEPRINT co often comes across hidden gems within the art and design industry. This collections' purpose is to embrace and showcase the works of rising artists by placing them under the spotlight, producing high-quality prints of their unique pieces. Artist Edition prints are printed with EPSON pigment inks on either Ilfords' Textured Cotton Rag (310 gsm) or Chromajets' Satin Photographic Paper (240 gsm) to share with our customers and acknowledge the growth and potential within these artists and their creations.



◀ TAKE ME THERE
#TAKEMETHERE



MONARCH
ALICIA BEECH
#MONARCH

*NOT AVAILABLE ON CANVAS

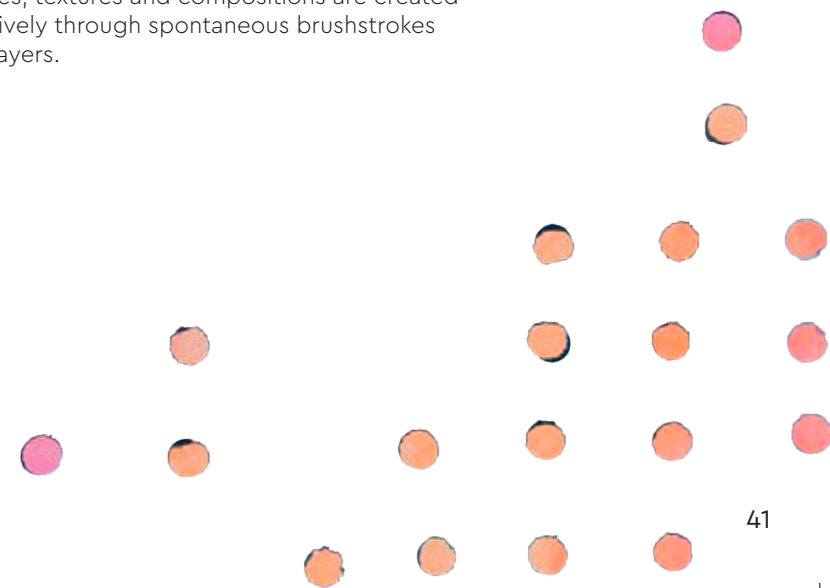
C D E F

'Revelation' *Alicia Beech*

Artist Edition

Alicia Beech is a New Zealand based artist whose art takes you back to your childhood, where there are no limitations on your imagination. When you could colour outside the lines and where colours and form have no rules.

Using predominantly acrylic on canvas Alicia brings bright and bold colours together with pastels and neons through abstract exploration. Shapes, textures and compositions are created intuitively through spontaneous brushstrokes and layers.





CHESARASARA
ALICIA BEECH
#CHESARASARA

*NOT AVAILABLE ON CANVAS

CS DS ES FS



SATELITE
ALICIA BEECH
#SATELITE

*NOT AVAILABLE ON CANVAS

CS DS ES FS



REVELATION
ALICIA BEECH
#REVELATION

*NOT AVAILABLE ON CANVAS

C D E F



KITE
ALICIA BEECH
#KITE

*NOT AVAILABLE ON CANVAS

C D E F



'Plants' *Andrew Dennis*

Artist Edition

Formerly known as Jumbo, Andrew Dennis is a commercial artist, illustrator, painter, and sign maker based in Sydney. Drawing from a diverse range of influences including modern 20th-century art, low-brow comic art, 90's skateboarding, graffiti culture and everything in between. Dennis has been actively making his vibrant and engaging artwork in public spaces around Australia and the world for well over a decade.

Working with a collection of characters and objects best described as a cabinet of curiosities, Dennis creates a decorative wallpaper that deals in subjects such as civilisation, future living, bio domes and animal behaviour. Much of this exploration taps into the visionary constructions of the artist as passionate collector and amalgamator of artefacts, whether it be retro furniture designs, early primitive african masks or other memorabilia. The constant search for interesting connections from human history is a source of intrigue and creative interest.



SMALL PLANT 1
ANDREW DENNIS
#AE-AD-005

CS DS ES FS



SMALL PLANT 4
ANDREW DENNIS
#AE-AD-008

CS DS ES FS



CEILING ZERO
CORBAN RENOUF
#AE-CR-002

*NOT AVAILABLE ON CANVAS

C D E F



INDISTINCT
CORBAN RENOUF
#AE-CR-001

*NOT AVAILABLE ON CANVAS

C D E F

'Indistinct' *Corban Renouf*

Artist Edition

Corban Renouf is an Artist born in New Zealand who now calls Melbourne home. Finding the plight between beauty and pandemonium is a theme that reoccurs in much of Corban's work. He is influenced by the old masters.

Trained as an animator and recently in architecture, Corban directs his energy to detail, however he is best known for black and white female portraiture. His passion began as a child growing up drawing and watching his dad enjoy painting. He learned and found that he was immersing in neatly drawn illustrations, this gave him control and order. However, later on in his years he found refuge in painting and became there are preoccupied with colours, textures as there were no rules with creativity.

That passion only further thrived as he developed an appreciation for Pollock's most famous "drip period" where he drip his decorates and created layers. He used hardened brushes, sticks, and even basting syringes as paint applicators. Corban's technique of pouring and dripping paint is an immediate means of creating art and finding refuge. With this technique he is able to find that friction between the detailed images of stylist beauty & the chaos created by paint.



**Dan Mason,
Original Art**

His studio practice embraces the notion that continual process experimentation is the seed for deep 'creative growth.'

BRAND
NEW

FLYING IN A BLUE DREAM
DAN MASON
 #AE-DM-001

*NOT AVAILABLE ON CANVAS

CS

DS

ES

FS

'Flying in a blue dream'

Dan Mason

Artist Edition

Dan Mason is a New Zealand born painter who has spent the past two decades, devoted to the exploration of his love for colour and texture.

An award-winning artist, he has held several sell out solo shows in Australia and has exhibited extensively throughout Europe on the Affordable Art Fair circuit.

"The artwork of Sir Howard Hodgkin has had the greatest impact on my creative journey – realism bores me to tears.

Being a lifetime surfer has also shaped my love, respect and appreciation of our earthly environment. It is my intention, through painting, to share the joys and challenges of our existence, to capture the layers and complexities that we face as humans and as custodians of our magnificent planet.

I work on several canvases over a period of time – the work is initially intuitive, making a mark, moving to the next, revisiting and responding to their individual energies – essentially allowing them to grow organically, they let me know when they're resolved with a vibration that I can only compare to looking into the eyes of a loved one."



HAPPY PLACE
DAN MASON
#AE-DM-004

*NOT AVAILABLE ON CANVAS

CS DS ES FS



ONE IN A MILLION
DAN MASON
#AE-DM-007

*NOT AVAILABLE ON CANVAS

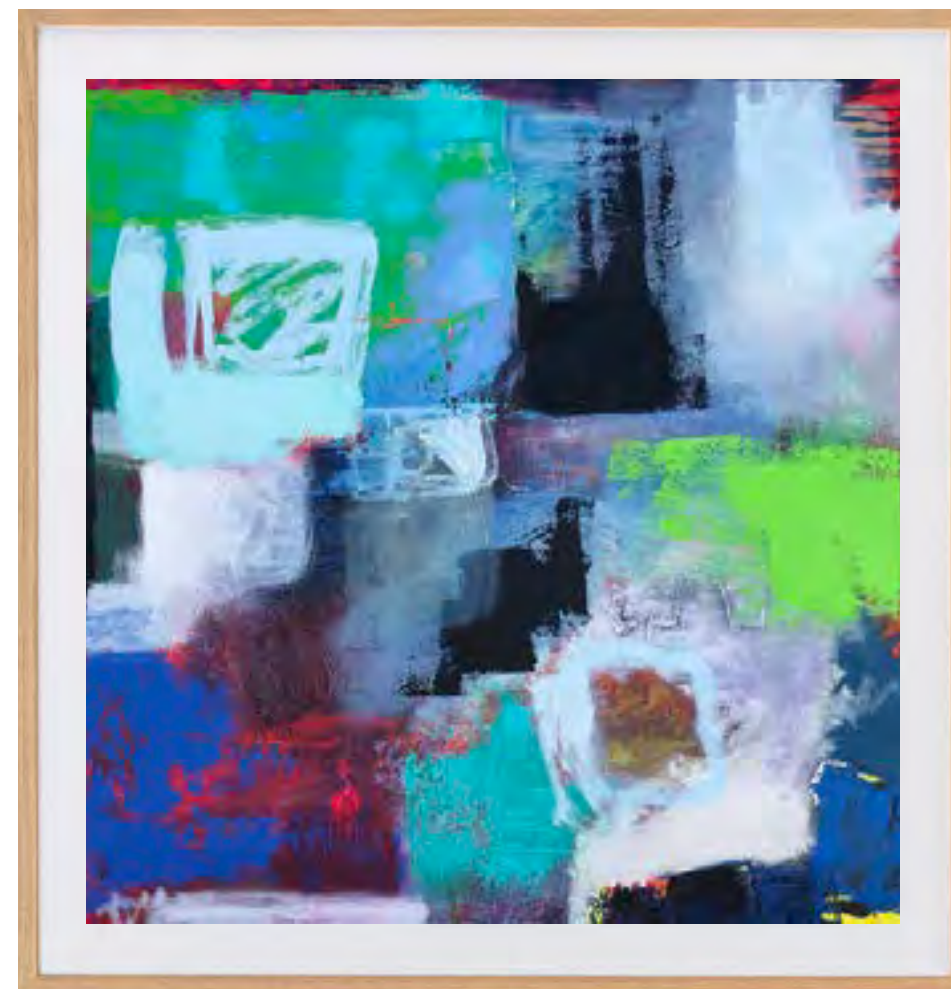
CS DS ES FS



LIKE A HEARTBEAT
DAN MASON
 #AE-DM-009

*NOT AVAILABLE ON CANVAS

CS DS ES FS



LISTEN TO THE WIND BLOW
DAN MASON
 #AE-DM-010

*NOT AVAILABLE ON CANVAS

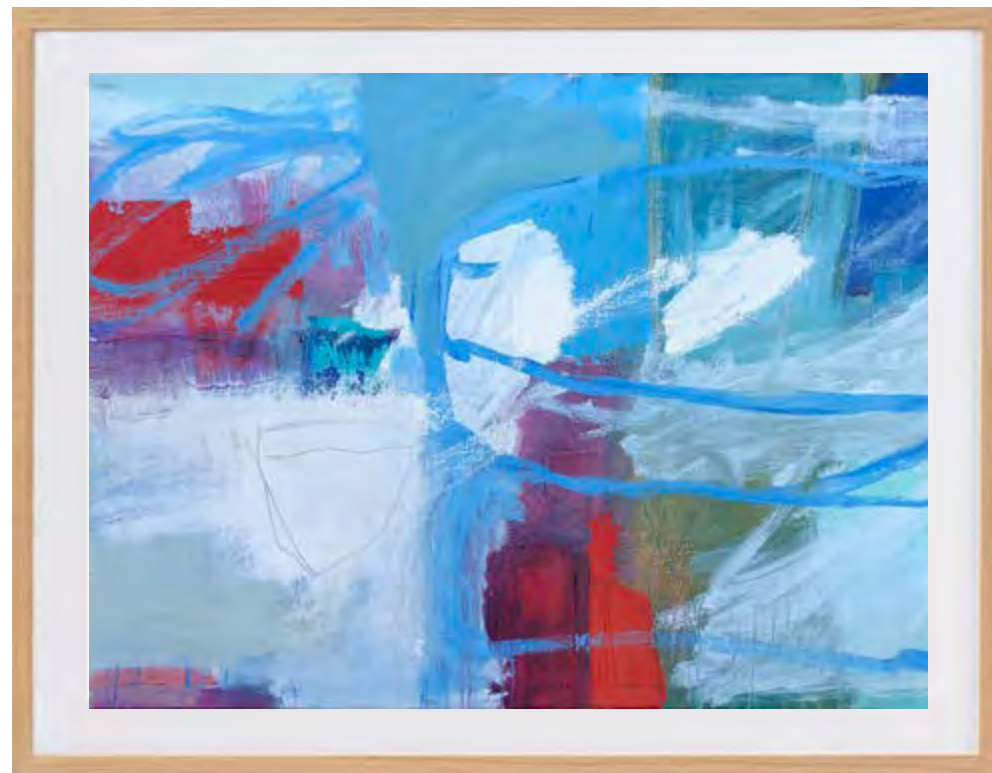
CS DS ES FS



SUNRISE OVER BURLEIGH
DAN MASON
#AE-DM-013

*NOT AVAILABLE ON CANVAS

C **D** **E** **F**



TURQUOISE LOVE
DAN MASON
#AE-DM-014

*NOT AVAILABLE ON CANVAS

C **D** **E** **F**

Commissions for original artwork available through enquiry.
Contact info@fineprintco.com for more information.



**Dan Mason,
Original Art**

ODE TO ROTHKO
#AE-DM-006

"I am inspired by the ocean
and our connection to the
natural world - As a child
we'd spend months at sea
aboard the ships that my
father worked on, rolling
with every wave."





'Melancholy' *Jo Olive*

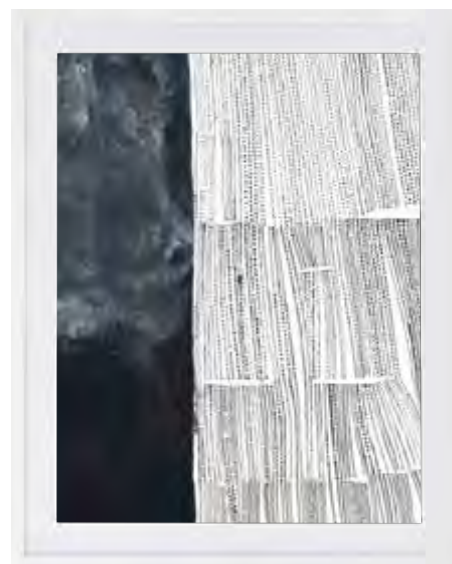
Artist Edition

An artist and multidisciplinary maker from Northern NSW Australia. Her work is characterised by an enduring interest in the mapping of place, the fugitive nature of memory and the documentation of her emotional and historical connection to land.

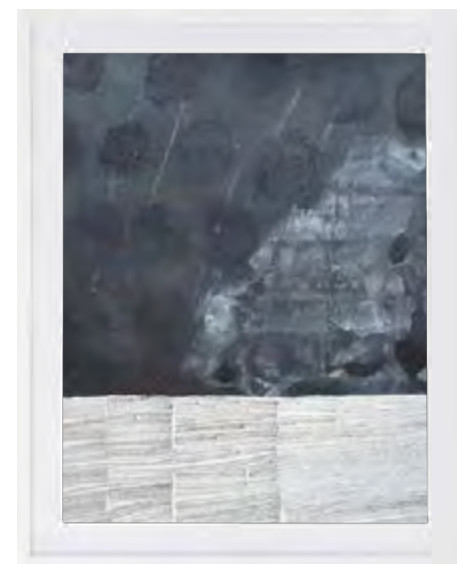
Her work favours intuitive mark-making, abstraction and the automatism of line. Largely self-taught, Olive's work is an intensely personal, cathartic process in which visual elements are simultaneously

lost and found through the physicality of scratching, sanding, puncturing, concealing and disclosing. Heavily concerned with process, these works ultimately produce a palimpsest, a recording of time.

"As a maker, I am also able to interpret elements of my arts practice into utilitarian objects that transform the everyday, objects such as textiles and letterpress paper-goods."



PLEASE SAVE EVERY PIECE OF ME 1
JO OLIVE
#AE-JO-043



MELANCHOLY II
JO OLIVE
#AE-JO-022



MUTTON BIRD ISLAND
JO OLIVE
#AE-JO-042



MELANCHOLY I
JO OLIVE
#AE-JO-017





OBSCURE
JO OLIVE
#AE-JO-007

CS DS ES FS GS



TRUTH
JO OLIVE
#AE-JO-015

CS DS ES FS GS



ECHO
JO OLIVE
#AE-JO-008

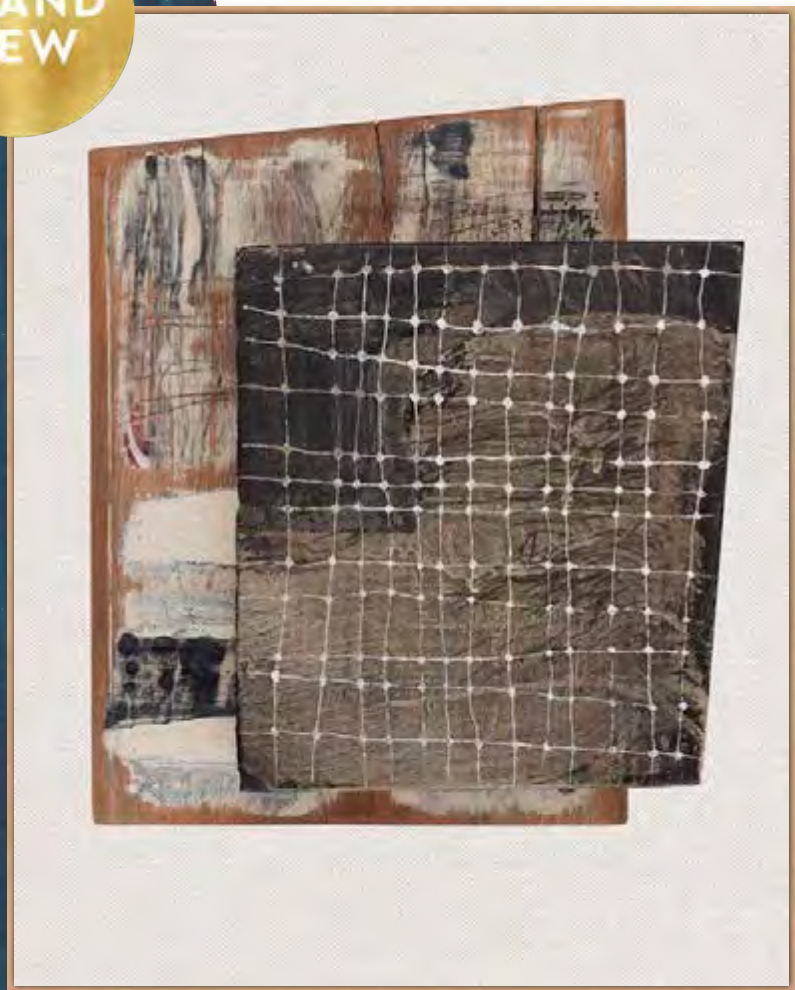
CS DS ES FS GS



HOME
JO OLIVE
#AE-JO-003

CS DS ES FS GS

BRAND
NEW



THE NETS
JO OLIVE
#AE-JO-041

C D E F G



THE WARF
JO OLIVE
#AE-JO-040

C D E F G



AGE
JO OLIVE
#AE-JO-032

CS DS ES FS GS



BOLD
JO OLIVE
#AE-JO-035

C D E F G



'Always' *John Kaye*

Artist Edition

An Australian Painter currently based in Seoul, South Korea. John Kaye has been painting for 15 years.

"It was a gradual process, The more I learn and the more I paint the more it becomes part of me. For me personally, art began as a way to escape reality, until eventually, it became something to believe in."

John's art stems from an early fascination with graffiti. Travelling and graffiti have both been huge parts of his life. His work responds to personal experience and the influences of his travels.

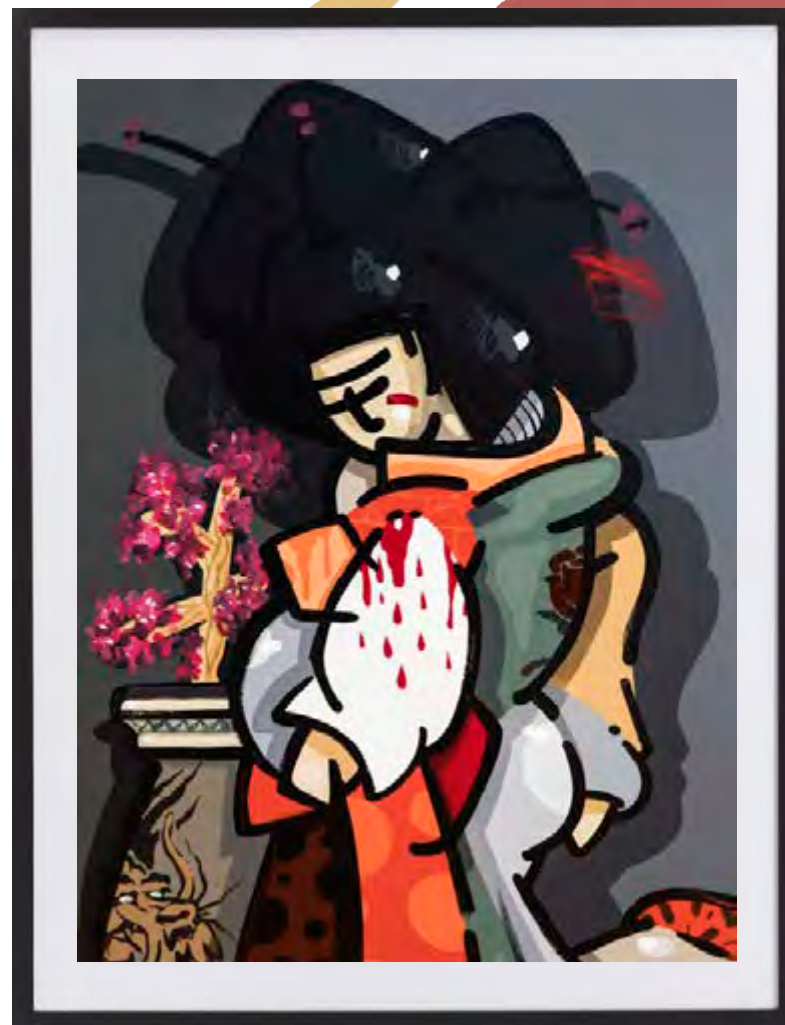
"These paintings were all developed while I was living in Copenhagen in 2016, They were built from my notes and sketches and I painted them all in my studio on the Gold Coast over the summer of 2017-18. In my opinion, they encapsulate the ideas of love, loss, fragility and motion."

◀ ALWAYS
#AE-JK-001



BLUE ROMANCE
JOHN KAYE
#AE-JK-002

CS DS ES FS



THE COURTESAN
JOHN KAYE
#AE-JK-003

C D E F



BALANCING ACT
JOHN SANTUCCI
#BALANCING-ACT



THE SPY
JOHN SANTUCCI
#THE-SPY



THE TRIP
JOHN SANTUCCI
#THE-TRIP



FAMILY
JOHN SANTUCCI
#FAMILY

CS

DS

ES

FS

*NOT AVAILABLE ON CANVAS

'Family' *John Santucci*

Artist Edition

John's work in the past has mainly focused on delightful surreal cityscapes and whimsical caravans. Moving to Byron Bay a few years ago brought about a change in surroundings launching him into new innovative thoughts and direction in art.

Not wanting to pursue the typical Byron Bay seascapes and lighthouses, he chose a subject that was closer to home – his own garden. This series is inspired by the fruits of his own labour in the garden culminating in a serene contemplation of form, composition and nature's incredible beauty.

"Inspiration for my work comes from many areas Architecture, Film and life experiences. Like many, I've always had a fascination for the circus. The Big Top is a place of magic, illusion, risk and spectacle - it encompasses childlike wonder along with something darker, even sinister."

'Bush Botanical' *by Katrina Read*

Artist Edition

Working closely with Interior Designers, and illustrating for her own National stationery brand, The Arty Hearts, the artist has developed a stunning new collection aptly titled 'Botanica'. Working with an on-trend palette, the 'Botanica' pieces also have a timeless style and elegance about them, reminiscent of the Royal Botanical Society, yet completely contemporary. Meticulously detailed, the pieces have an almost perfect balance to the eye. Each element in these striking watercolours perfectly formed and painted to give not only a feeling of depth, but an ethereal like quality as the stones seemingly fall away from the center piece into the abyss.



BRAND
NEW

BOTANICA
KATRINA READ
#AE-KR-001

*NOT AVAILABLE ON CANVAS

C D E F





WILDFIRE
KATRINA READ
#AE-KR-005

*NOT AVAILABLE ON CANVAS

C D E F



MIA BELLA
KATRINA READ
#AE-KR-003

*NOT AVAILABLE ON CANVAS

C D E F



ELYSIUM
KATRINA READ
#AE-KR-004

*NOT AVAILABLE ON CANVAS



EVERGREEN
KATRINA READ
#AE-KR-002

*NOT AVAILABLE ON CANVAS





BRAND
NEW

'Boketto'

Lara Timireva

Artist Edition

When you are not human, even the most usual things seem strange. I call my work Boketto – act of pointless and continuous gazing into emptiness.

My inspiration comes from the experience of getting out of my body. It is rather a language than a beautiful picture. Those are the stories about other worlds contained in the title, small text passages under the art objects and four digits in the end. These digits are the date of getting out of body. Each person that I knew has exited into the worlds at the same time. I decided to include it to the title. The date is written without the dots. This is not a typo. The time is vertical and any type of separation leads to deception. Every second we break down into a great number of parts, like beads, and we roll on the floor of Being. This is what I try to capture in my paintings. By dissecting the subject, stripping it from its purpose, we can get closer to its existential essence. To one of its borders.



SNOW LIME 2906
LARA TIMIREVA
 #AE-LT-001

C D E F G



STALKER 3007
LARA TIMIREVA
#AE-LT-002

C D E F G



GOLD SEA 2602
LARA TIMIREVA
#AE-LT-003

C D E F G



SATURN'S RINGS 2501
LARA TIMIREVA
 #AE-LT-004

C D E F G



FIRE UNDER WATER 2201
LARA TIMIREVA
 #AE-LT-005

C D E F G



SEA IN THE SKY 2601
LARA TIMIREVA
#AE-LT-011

How am I doing it? And what is it? I create macroexpressionist installation the size of not bigger than a thimble. Everything is in motion in this installation. I separate, I tear apart. I use gold, metal, glass, oil, any other types of paint, bitumen, pieces and parts of ordinary everyday objects. I destroy them. I use my camera to peer into their reflection. Nevertheless, many people who were witnessing this process could not understand what exactly I was doing in that pile of chaos. Even when I showed them the image taken by the camera (which is just the initial, first stage of making the painting), they looked back at the objects and could not find which part was captured there. I intentionally use the term "capture". I try to capture everything while it is in motion, until the paint is dry. Initially, I only used gouache and other fluid paints. They interacted well with each other but very quickly dried out. I did not have enough time to finish the installation and start my personal process of creation. Oil allows the artist to go through the process without any hurry and in full depth. Next comes the second stage: transferring my painting onto a reflective surface. I am fond of gold on wood (icon technology) and mirror metals. Creating through reflecting material it and getting absorbed by it. I am not looking for any distortions. We simply live in this reflection and we do not know any other. Why my series is called "White Apocalypse"? White. It is more of a sound than a color. Absolute pureness and serenity that preceded the creation of Chaos. The Big Bang was the white point of the Universe. Apocalypse is the revelation that brings us back to our origins and sets us free. We already live in the times of White Apocalypse. All that is left for us to do is memorize. Memorize every beautiful thing that still exists in this world.



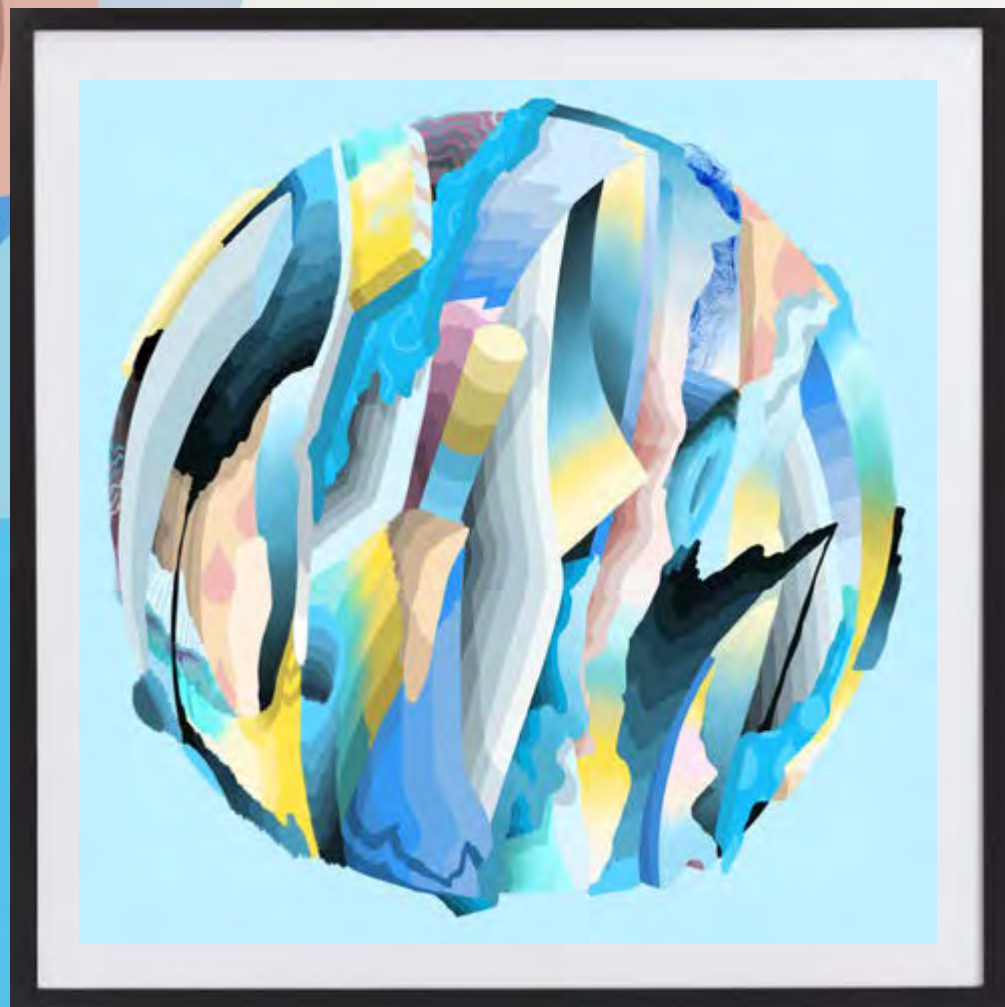
BAST 1904
LARA TIMIREVA
 #AE-LT-006

C **D** **E** **F** **G**



AMON RA 0611
LARA TIMIREVA
 #AE-LT-007

C **D** **E** **F** **G**



SERAC
LEANS
#AE-LL-005

CS

DS

ES

FS

'Serac' by Leans

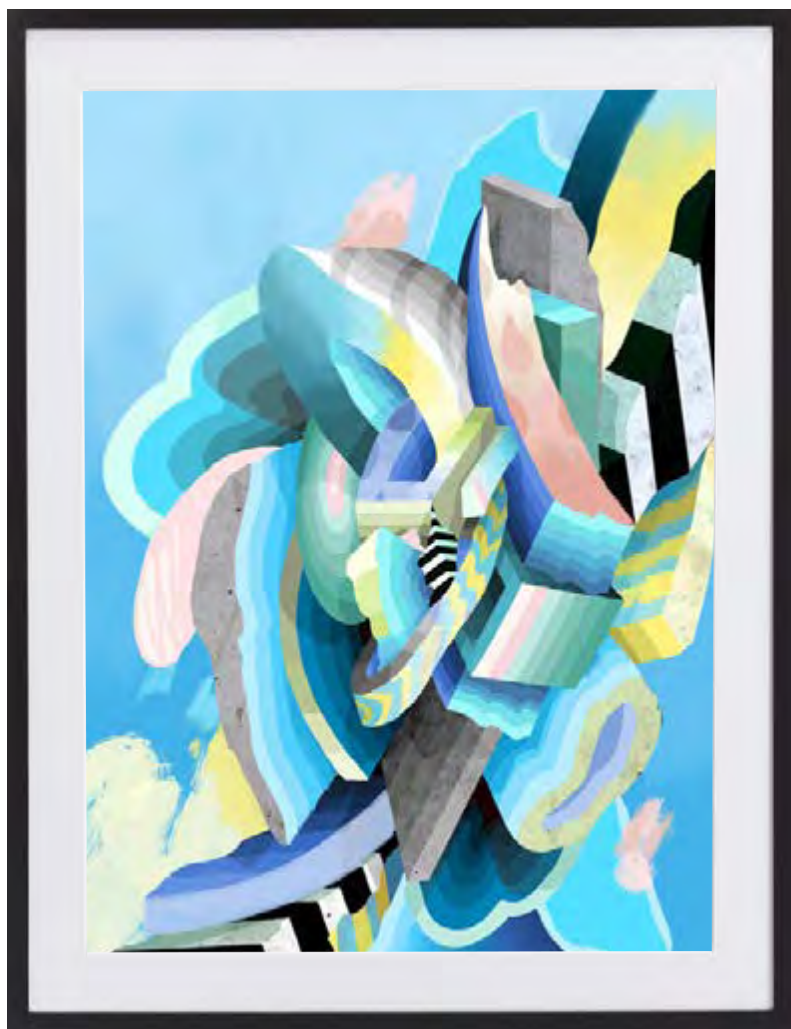
Artist Edition

Leans is a Brisbane based artist. Through his work, he strives to fabricate an entity that can be seen by the viewer on numerous occasions and enjoyed in alternative ways on each visit. The way in which Leans creates his artwork is much like an ecosystem. There is no plan.

The way in which Leans creates his artwork is much like an ecosystem. There is no plan. There is only his reactions and evolutions to what came before. Starting with one element, the piece adapts and unfolds. Colour and form must interact with each other until there is harmony between everything.

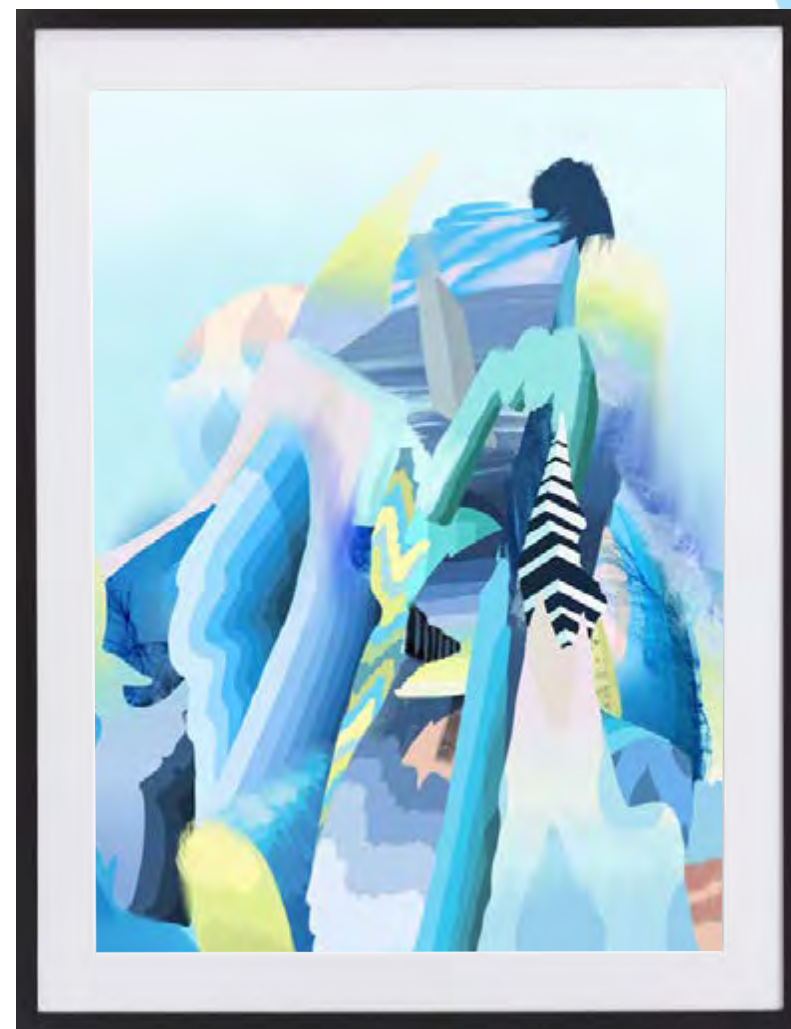
Leans is humbled by the journey his art has allowed him to take so far in life and is now dedicated to exploring the depths of his maturing mind.





EMMETROPIA
LEANS
#AE-LL-001

C D E F G



PRECIPICE
LEANS
#AE-LL-004

C D E F G



NEW BEGINNINGS 1
MARILYN WALLACE-MITCHELL
#AE-MW-011

C D E F G



NEW BEGINNINGS 2
MARILYN WALLACE-MITCHELL
 #AE-MW-012

*PRINTED DECKLED EDGE



'Nature Inspired' *Marilyn* *Wallace-Mitchell*

Artist Edition

After a long successful career as an Interior Designer, Marilyn shifted her focus to her other passion – art. Whilst studying at Byron School of Art she discovered a new love, in the form of print making. Since then, print making has become a large part of her practise.

Now living steps away from the beautiful coastline beaches of northern New South Wales, Marilyn's inspiration comes from nature in her local environment, and she is constantly inspired by nature's unique and never ending ability to create countless forms, textures and mark making.

"After my morning walk, I let nature's patterns and textures feed my thoughts and art practise. With a general feel and direction in mind I enjoy the creative, spontaneous process of this style of mono printing. For me, this approach seems to have endless the possibilities. Each print has its own unique qualities. Some print images are complete as is, though often I can see ways to enhance each print image with additional mark making and textures, using coloured inks, charcoal, pastels, pencil, collaged and engraved textured papers to finish off each piece".

"Nature Inspired" is a collection of some of Marilyn's latest artworks.



NATURE'S TREASURES 1
MARILYN WALLACE-MITCHELL
#AE-MW-002

*PRINTED DECKLED EDGE



NATURE'S TREASURES 2
MARILYN WALLACE-MITCHELL
#AE-MW-001

*PRINTED DECKLED EDGE





TIDAL MARKS 1
MARILYN WALLACE-MITCHELL
#AE-MW-006

*PRINTED DECKLED EDGE

C D E F G



TIDAL MARKS 2
MARILYN WALLACE-MITCHELL
#AE-MW-007

*PRINTED DECKLED EDGE

C D E F G



NEW LIFE 1
MARILYN WALLACE-MITCHELL
#AE-MW-010

*PRINTED DECKLED EDGE

C D E F G



NEW LIFE 2
MARILYN WALLACE-MITCHELL
 #AE-MW-009

*PRINTED DECKLED EDGE

C D E F G



NEW LIFE 3
MARILYN WALLACE-MITCHELL
 #AE-MW-008

*PRINTED DECKLED EDGE

C D E F G



THREADS OF NATURE 1
MARILYN WALLACE-MITCHELL
#AE-MW-017

*PRINTED DECKLED EDGE

C D E F G



THREADS OF NATURE 2
MARILYN WALLACE-MITCHELL
#AE-MW-005

*PRINTED DECKLED EDGE

C D E F G



COASTAL MARKS 1
MARILYN WALLACE-MITCHELL
#AE-MW-004

P



COASTAL MARKS 2
MARILYN WALLACE-MITCHELL
#AE-MW-003

P





REPOSE
PAMELA HONEYFIELD
#AE-PH-010

CS DS ES FS

*NOT AVAILABLE ON CANVAS

'Repose' *Pamela Honeyfield*

Artist Edition

Pamela says; "I would best describe my work as digestible abstract, a landscape with hints of the obvious. I work on mostly large scale canvas and linen in oils and also enjoy working on paper and board in mixed media. My work attempts to capture the mood, atmosphere and raw energy of places traveled and experienced. I rely on memory to recreate scenes and play with colour to entice the viewer and evoke a response.

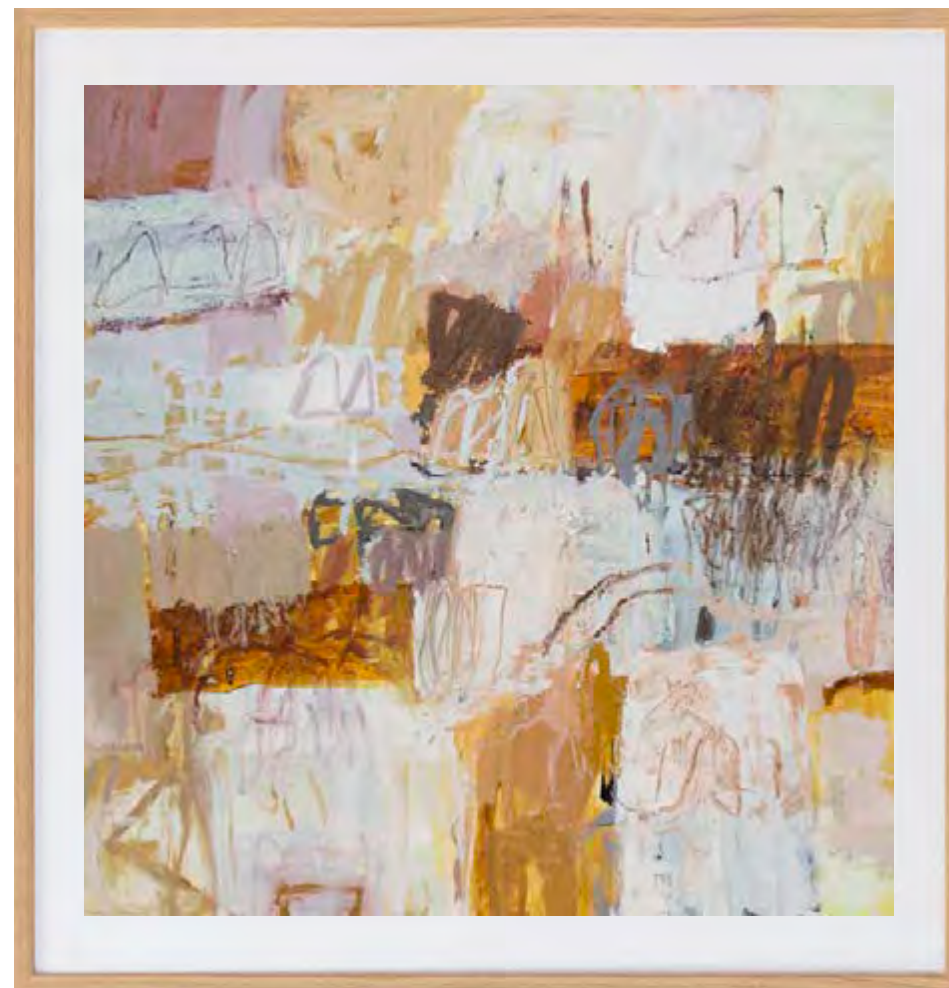
I don't always have set rules for painting, the work will often dictate my next move and as we enter this dance and relationship I allow the colour and the movement of marks and shapes to play and interact. There are many variables when creating a work and you have to be willing to lose and regain images until it's resolved. The best marks made and paintings created are when I seemingly disappear for a while in my work, and when I return I know that I have had some kind of 'happening' with the canvas."



SLAVE TO THE RHYTHM
PAMELA HONEYFIELD
#AE-PH-009

*NOT AVAILABLE ON CANVAS

CS DS ES FS



CONNECTION
PAMELA HONEYFIELD
#AE-PH-004

*NOT AVAILABLE ON CANVAS

CS DS ES FS

'Calm Seas' by Fran Miller

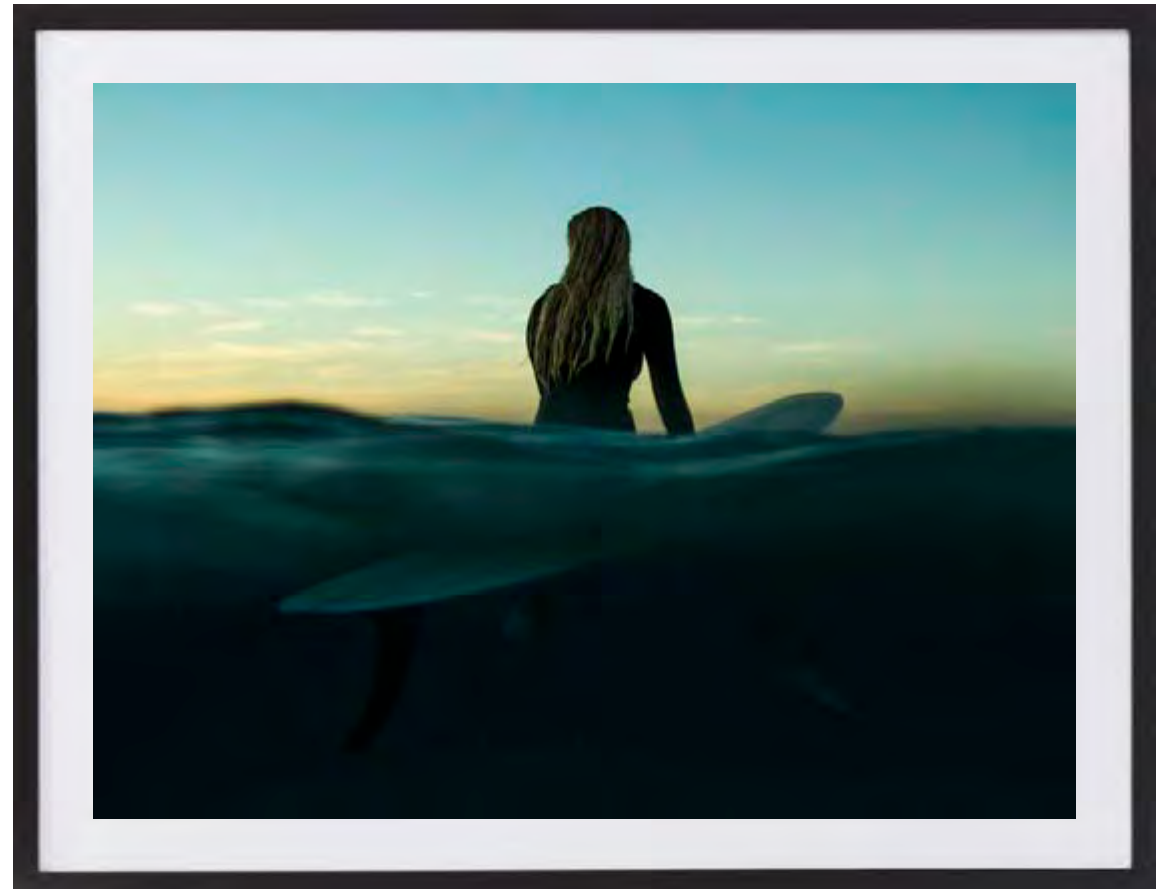
Photographic Edition

Frances 'Fran' Miller is a Sydney born photographer now living on the Gold Coast of Australia.

Specialising in fine art surf and water photography, Fran has been published in a variety of international editorial publications as well as being ubiquitous online and across social media channels having worked with a large number of world renowned surfers. Fran is a regular contributor to The Inertia and World Surf League.

"Instinctively I enjoy taking photographs that leave the viewer with more questions than answers. I am a surfer and I am passionate about the ocean, but I crave creating pieces that explore moods and feelings rather than being solely documentative, whilst still using surfing and the ocean as my medium.

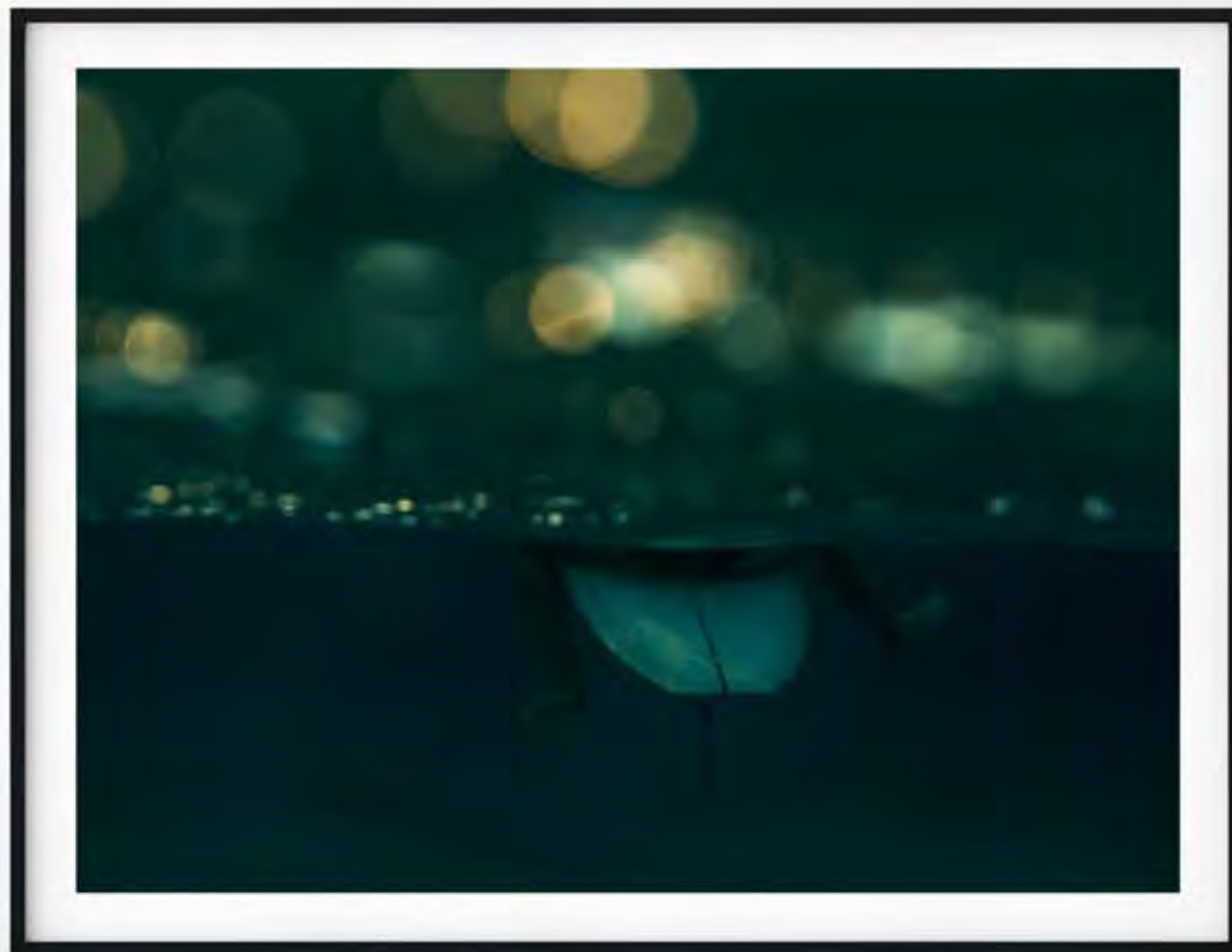
I take diverse and somewhat incoherent inspiration from a wide spectrum of artists such as Caravaggio, Bernini and Munch as well as photographers like James Welling and John Chiara. Going forward, I am truly excited to test and explore the evolution of photography in surfing, and hopefully leave my audience perplexed, questioning and reflective."



CALM SEAS
FRAN MILLER
#AE-FM-003

C D E F G

UNDER BOARD
FRAN MILLER
#AE-FM-002





DARK BLUE
FRAN MILLER
#AE-FM-004

C D E F G



WAVE SHIFT
FRAN MILLER
#AE-FM-005

C D E F G




LIFE
FRAN MILLER
#AE-FM-017

C D E F G



WAVE BREAKER
FRAN MILLER
#AE-FM-016

C D E F G



'Underwater' *Francesca Owen* *Photographic Edition*

Francesca Owen is a photographic artist who specialises in underwater photography. Her passion for the water started as a Synchronised Swimmer at the age of 8, following on to compete at the 2012 Olympic Games.

Her Bachelor of Photojournalism enabled her to combine two of her passions, water and photography which took her beneath the surface. She enjoys capturing the magic that unfolds underwater, and lures her audience in through the elegance and movement of the human body.

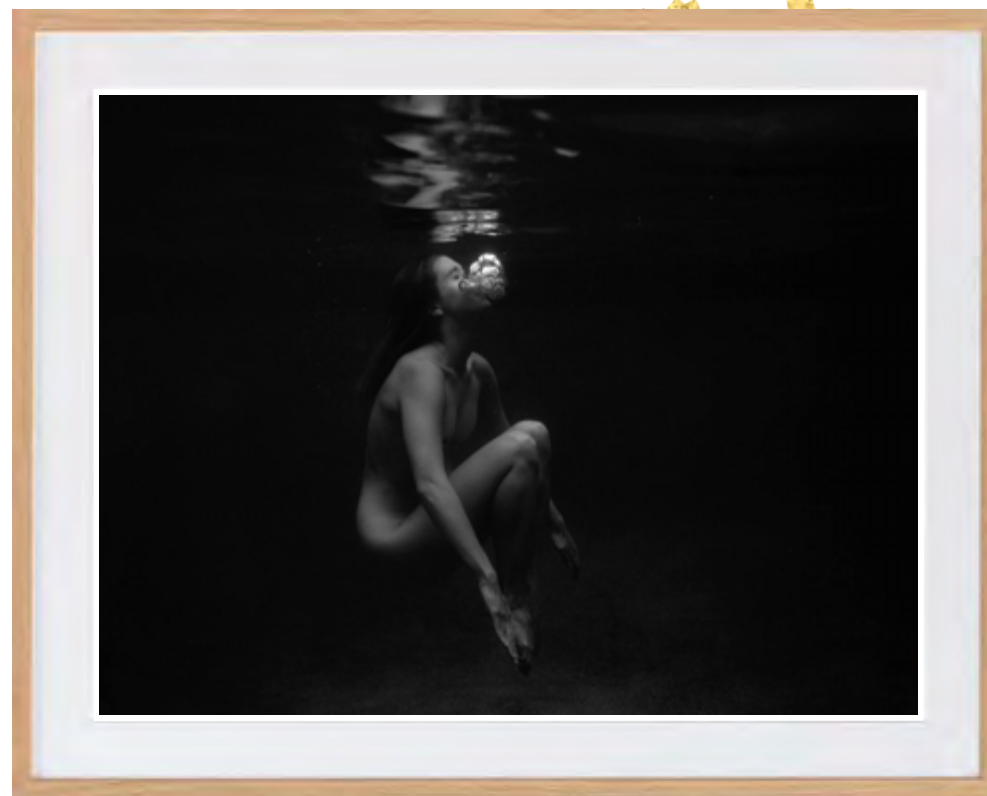
"People always use to refer to synchro swimmers as mermaids, so I wanted to incorporate a feminine element to the body of work but drawing it back to basics. Mermaid bones is all about exposing the raw beauty of the human body as well as the feeling you get when in the water. Mermaid bones came to me one day after a morning shoot at Noosa and it all just clicked!"

HOLD ON
FRANCESCA OWEN
#AE-FO-005



FLOATING
FRANCESCA OWEN
#AE-FO-003

C D E F G



LET GO
FRANCESCA OWEN
#AE-FO-004

C D E F G

LEAN
FRANCESCA OWEN
#AE-FO-001



BOOST
FRANCESCA OWEN
#AE-FO-002





LA FONTELINA DAYS PART. 1
FRANCESCA OWEN
#AE-FO-009

C D E F G



WAITING FOR YOU
FRANCESCA OWEN
#AE-FO-010

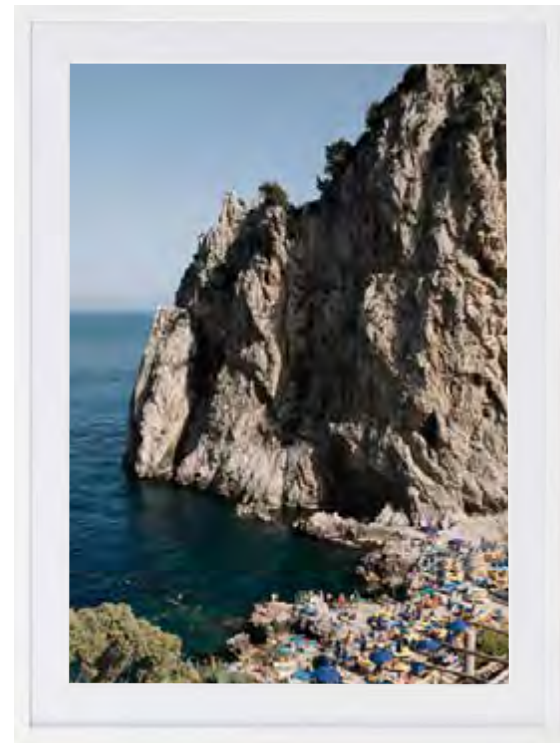
C D E F G



UMBRELLAS
FRANCESCA OWEN
#AE-FO-011



LA FONTELINA DAYS PART. 2
FRANCESCA OWEN
#AE-FO-012



CAPRI DAYS
FRANCESCA OWEN
#AE-FO-008

C D E F G

C D E F G

C D E F G

VIBEACH

Amber'

by Kyle Jenkinson

Photographic Edition

Kyle is a water photographer and surfer from Sydney, Australia. "The ocean offers so much to us, and water photography to me is just one of many ways to enjoy and share its universal joy." Kyle is really drawn to the idea of taking a piece of what you see and feel out there in the water home with you to share with others, and to keep looking back on forever.

AMBER
KYLE JENKINSON
#AE-KJ-001



DUSK
KYLE JENKINSON
#AE-KJ-004

C D E F G

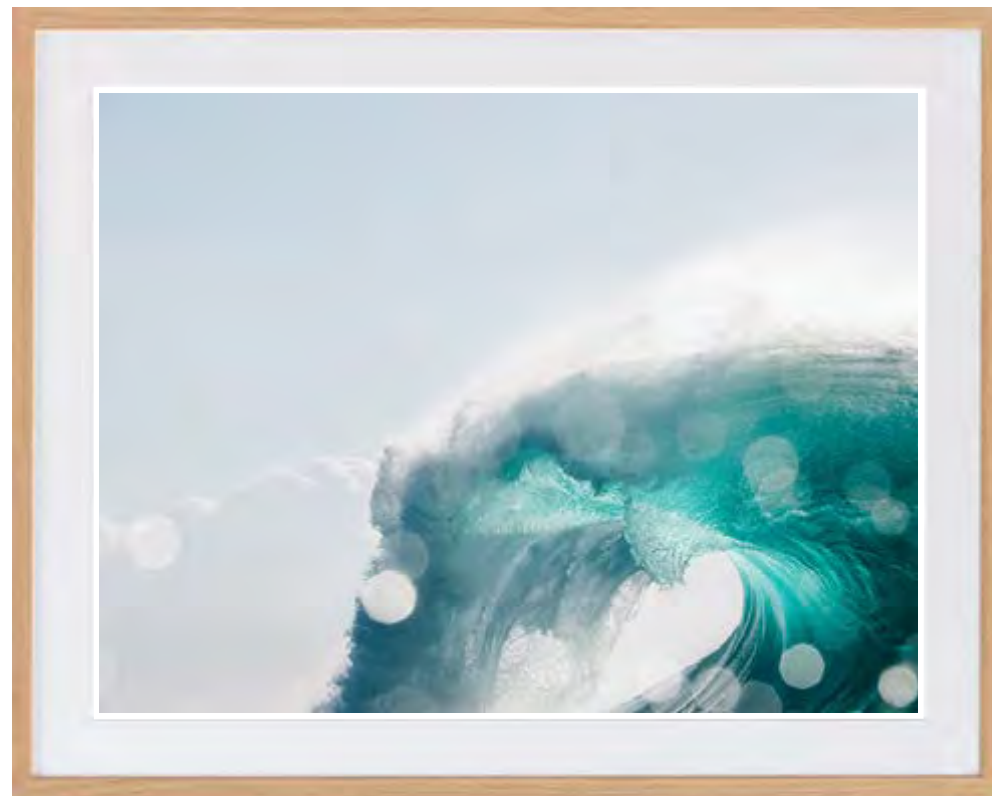


ESCAPE
KYLE JENKINSON
#AE-KJ-005

C D E F G



PURPLE HAZE
KYLE JENKINSON
#AE-KJ-011



PORTAL
KYLE JENKINSON
#AE-KJ-014

C D E F G

C D E F G



SABRE
KYLE JENKINSON
#AE-KJ-008



LUCID
KYLE JENKINSON
#AE-KJ-012

C D E F G

C D E F G

PALM SPRINGS CITY HALL
SEAN & KAT
#AE-SK-014



'Palm Springs' Sean & Kat

Photographic Edition

Sean and Kat are Melbourne based photographers who love the chase for the next image. Fascinated by the way people live, the things that make us human, the differences but also the similarities we all share. While they both share similar interests photographically, they each have their own style that complements each other.

Sean adds "Kat learnt in the darkroom with film cameras and really searches out her images in a thoughtful classic way with strong composition. I on the other hand am very much a digital boy. I shoot very instinctively and often come away having shot way too many images! I think we both learn off each other a lot of the time".

BRAND
NEW



PALM SPRINGS
SEAN & KAT
#AE-SK-015

C D E F G



DESERT
SEAN & KAT
#AE-SK-017

C D E F G



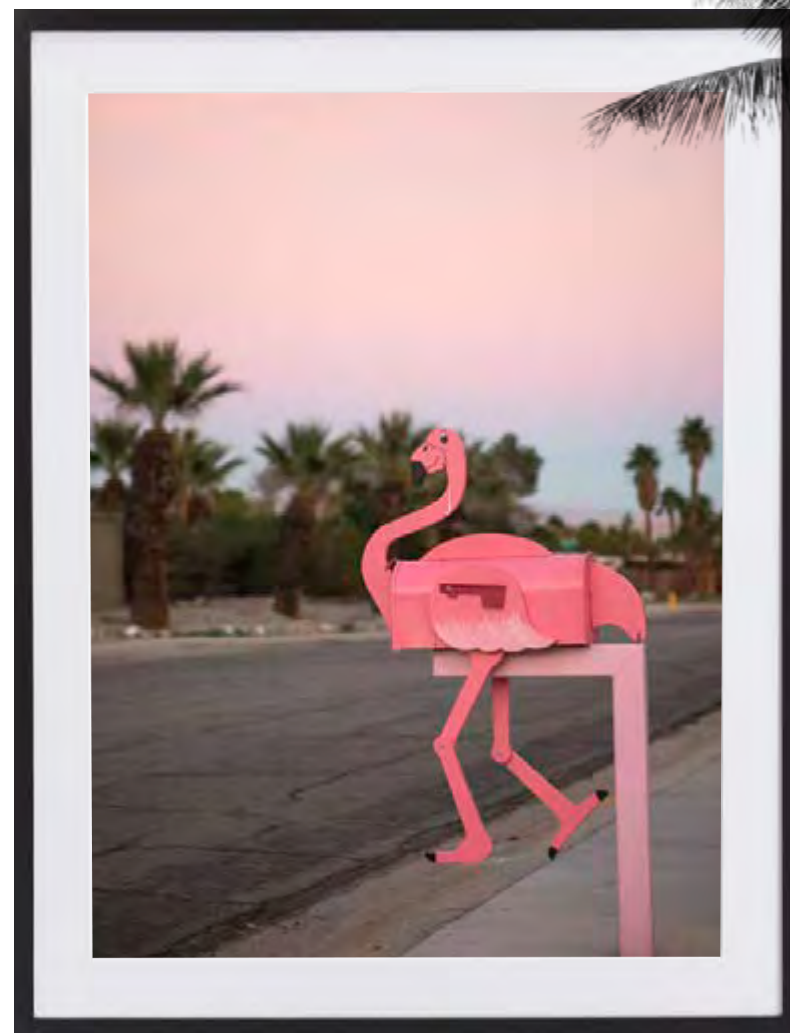
SUNSET
SEAN & KAT
#AE-SK-019

C D E F G



RADCAT
SEAN & KAT
#AE-SK-016

C D E F G



PALM SPRINGS FLAMINGO
SEAN & KAT
#AE-SK-018

C D E F G

'City to Coast'

Trent Szmolnik

Photographic Edition

Trent Szmolnik is a Melbourne born photographer, now residing in Sydney, Australia.

Specialising in travel and lifestyle photography, he started working as an event photographer in 2014, shooting various events around Brisbane. Since then, Trent has further developed his style working with a variety of brands to capture content for use on a variety of social media platforms, editorial and online.

Trent enjoys documenting his travels and sharing his photography online with his social media following. Having recently returned from the United States, he has been able to capture some truly emotive work, exhibiting his 'golden tone' style he is well-known for.

"I look to create images that evoke a certain mood or emotion. I endeavour to go against the grain in order to stand out amongst the crowd, constantly thinking how can I take this differently? I aim to make people stop and get lost in my images. This selection of photos has been carefully curated in order to share my journey with you all."



TIDE
TRENT SZMOLNIK
#AE-TS-001

C D E F G





THE HILLS
TRENT SZMOLNIK
#AE-TS-003

C D E F G



STARS AND STRIPES
TRENT SZMOLNIK
#AE-TS-004

C D E F G



ARID
TRENT SZMOLNIK
#AE-TS-009

C D E F G



BONE DRY
TRENT SZMOLNIK
#AE-TS-010

C D E F G



THE GREAT DIVIDE
TRENT SZMOLNIK
#AE-TS-005

C D E F G



DOWNTOWN
TRENT SZMOLNIK
#AE-TS-006

C D E F G



EMPIRE
TRENT SZMOLNIK
#AE-TS-007

C D E F G

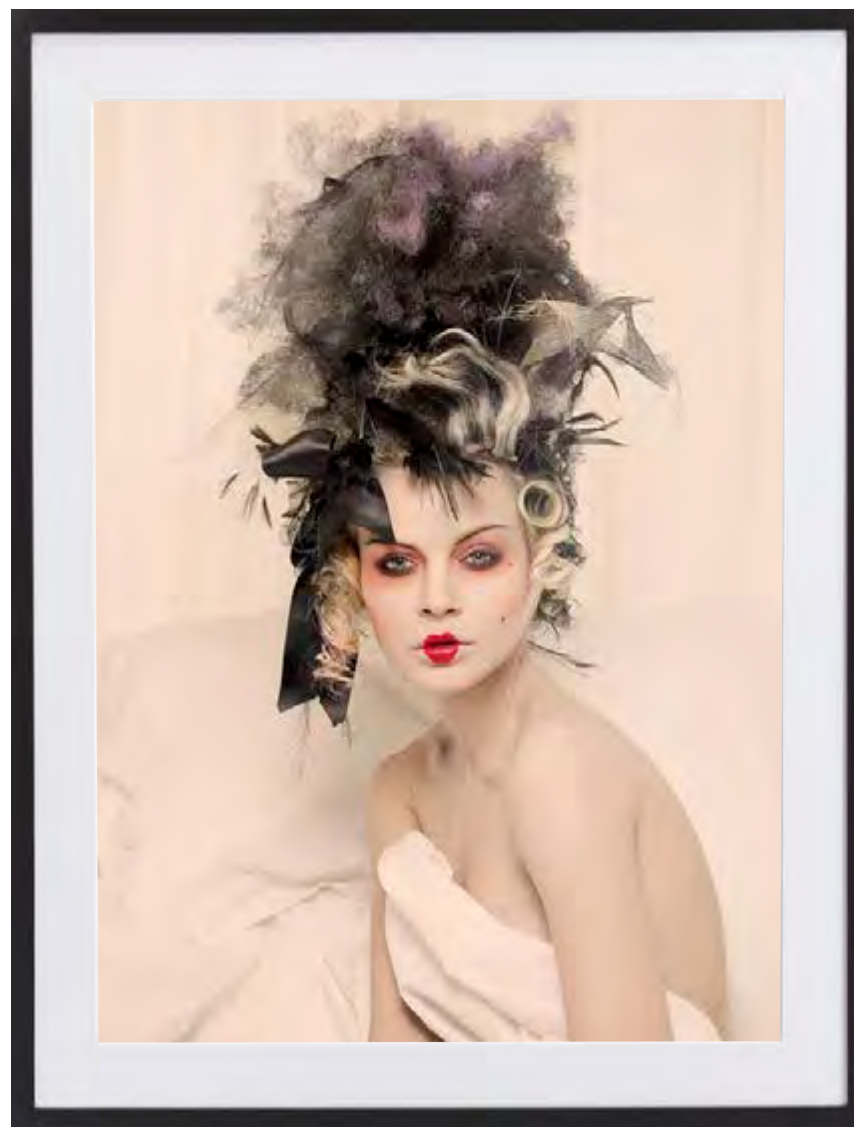


REFUGE
TRENT SZMOLNIK
#AE-TS-008

C D E F G

Trunk Archive Photographic Edition

Recognised by the elite Great Bowery Inc. in New York, Trunk Archive is an agency that distributes thousands of images of fashion, entertainment, travel, beauty and lifestyle orientation from many of the finest worldwide photographers not limited to modern times. They have multiple impressive partnerships with establishments within the fashion and entertainment industries and constantly add images to their collection each week, making FINEPRINT co's Photographic Edition range a range that is ever-changing, evolving and forever offering something new. Trunk Archive prints are available here at FINEPRINT co in five sizes and are printed on either Ilford's Textured Cotton Rag (3190 gsm) or Chromajet's Satin Photographic Paper (240gsm) with EPSON pigment inks. Scandi, black or Bespoke framing options are available.



RENAISSANCE 4
VINCENT ALVAREZ
#TRU1602104

C D E F G



SWAN
ROBERT JASO
#TRU1757588

C D E F G



WILTED BOUQUET
GRAEME MONTGOMERY
#TRU451693

C D E F G





RENAISSANCE 7
VINCENT ALVAREZ
#TRU1602092

C D E F G



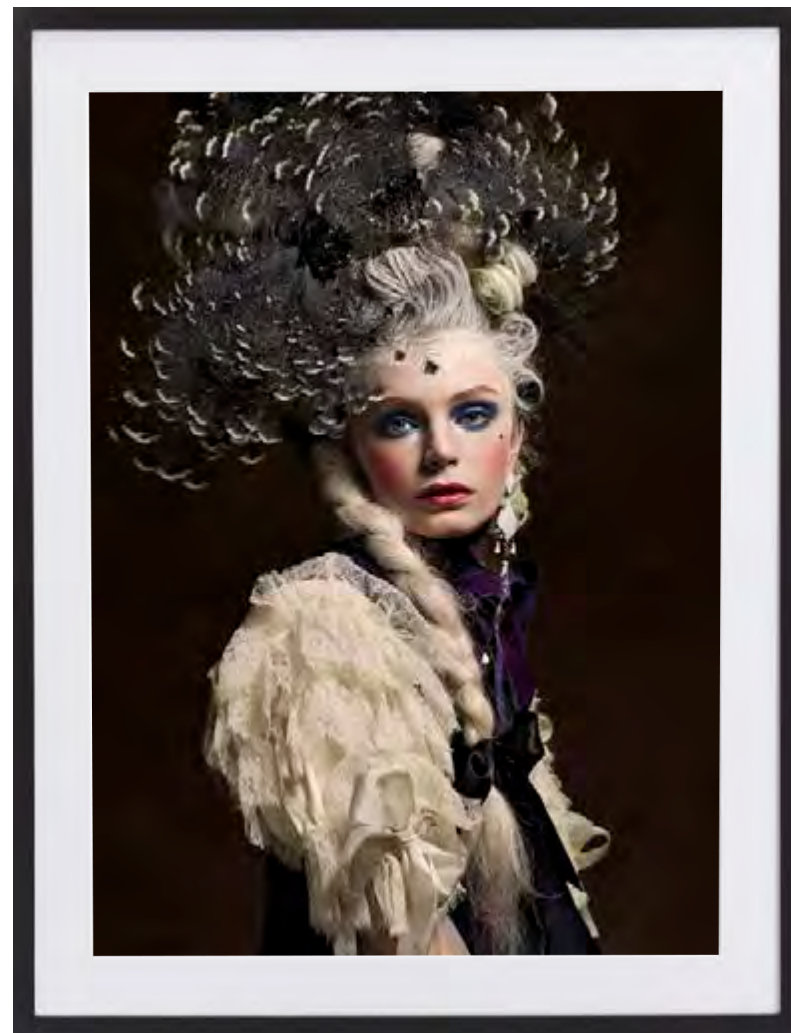
RENAISSANCE 2
VINCENT ALVAREZ
#TRU1602068

C D E F G



RENAISSANCE 5
VINCENT ALVAREZ
 #TRU1602100

C D E F G



RENAISSANCE 3
VINCENT ALVAREZ
 #TRU1602072

C D E F G



RENAISSANCE 1
VINCENT ALVAREZ
#TRU1602062

C D E F G



RENAISSANCE 6
VINCENT ALVAREZ
#TRU1602098

C D E F G



GLAMOUR 1
ROBERT JASO
#TRU1553865

CS DS ES FS GS



GLAMOUR 2
ROBERT JASO
#TRU1553872

CS DS ES FS GS



BUBBLEGUM 2
JOHN AKEHURST
#TRU1541047



LIGHTHOUSE ADVENTURES
GRAHAM SHEARER
#TRU564294





BEHIND THE SCENES
THANASSIS K
 #TRU1566996

C D E F G



MASQUERADE
THANASSIS K
 #TRU1746053

C D E F G



BOTTLED EMOTION
GRAEME MONTGOMERY
#TRU91761

C D E F G



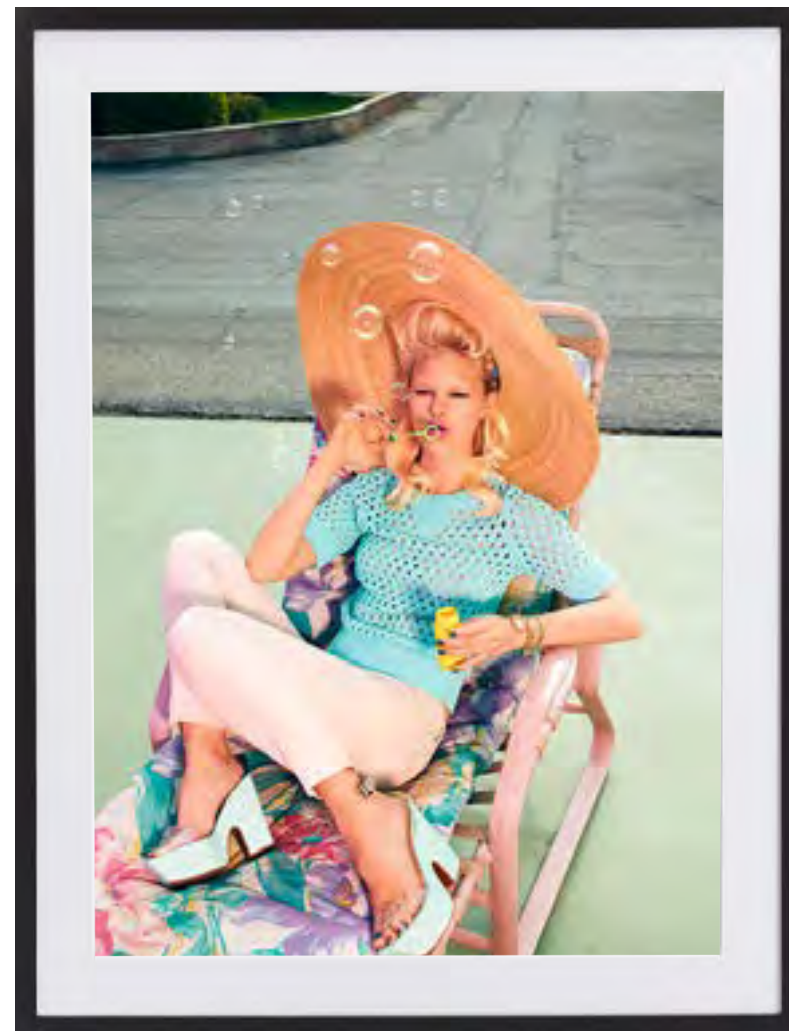
SUNLIT
SIMON BURSTALL
#TR-SIBU-000262

C D E F G



TRUNK DRIVER
SIMON BURSTALL
#TRU799246

C D E F G



BUBBLES
SIMON BURSTALL
#TRU799251

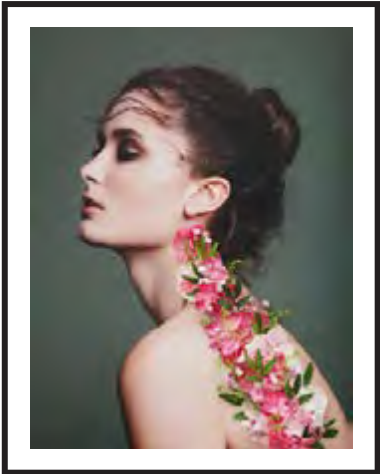
C D E F G

PORTRAIT / LANDSCAPE SIZES

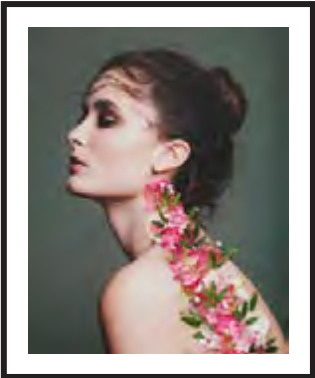


G Framed Size: 1030mm x 1330mm
Image Size: 1000mm x 1300mm

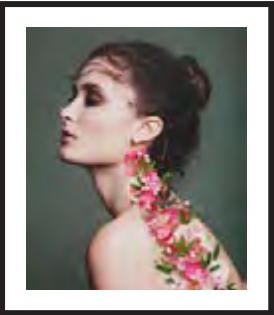
Only available on Satin Canvas



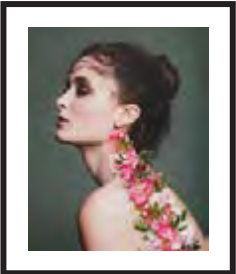
F



E



D



C

Photo Matt Paper (230 GSM) *50mm Printed Border

F Framed Size: 950mm x 1190mm
Image Size: 820mm x 1060mm

E Framed Size: 790mm x 950mm
Image Size: 660mm x 820mm

D Framed Size: 690mm x 790mm
Image Size: 560mm x 660mm

C Framed Size: 590mm x 690mm
Image Size: 460mm x 560mm

Satin Canvas (310 GSM)

F Framed Size: 790mm x 1030mm
Image Size: 760mm x 1000mm

E Framed Size: 630mm x 790mm
Image Size: 600mm x 760mm

D Framed Size: 530mm x 630mm
Image Size: 500mm x 600mm

C Framed Size: 430mm x 530mm
Image Size: 400mm x 500mm

SQUARE SIZES



GS Framed Size: 1030mm x 1030mm
Image Size: 1000mm x 1000mm

Only available on Satin Canvas



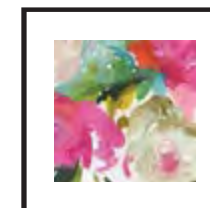
FS



ES



DS



CS

Photo Matt Paper (230 GSM) *50mm Printed Border

FS Framed Size: 950mm x 950mm
Image Size: 820mm x 820mm

ES Framed Size: 790mm x 790mm
Image Size: 660mm x 660mm

DS Framed Size: 690mm x 690mm
Image Size: 560mm x 560mm

CS Framed Size: 590mm x 590mm
Image Size: 460mm x 460mm

Satin Canvas (310 GSM)

FS Framed Size: 790mm x 790mm
Image Size: 760mm x 760mm

ES Framed Size: 630mm x 630mm
Image Size: 600mm x 600mm

DS Framed Size: 530mm x 530mm
Image Size: 500mm x 500mm

CS Framed Size: 430mm x 430mm
Image Size: 400mm x 400mm

Open Edition Print Collection

The Open Edition collection is FINEPRINT co's compilation of affordable, easily-accessible prints of photography, original art and digital art created predominately by our in-house artist and graphic designers. The diversity of these expansive ranges caters to all including trade and wholesale clients. What makes our ever-changing Open Edition collections so unique is the fact that they are built upon the yearly trending colours and movements within the industry, meaning that there is always something for everyone.



FLAMINGO
#GI-1079070104

C D E F G



LILACS & PHLOX
#GI-517382493

CS

DS

ES

FS

GS



FLORAL COLLAGE
#GI-1026036968

C

D

E

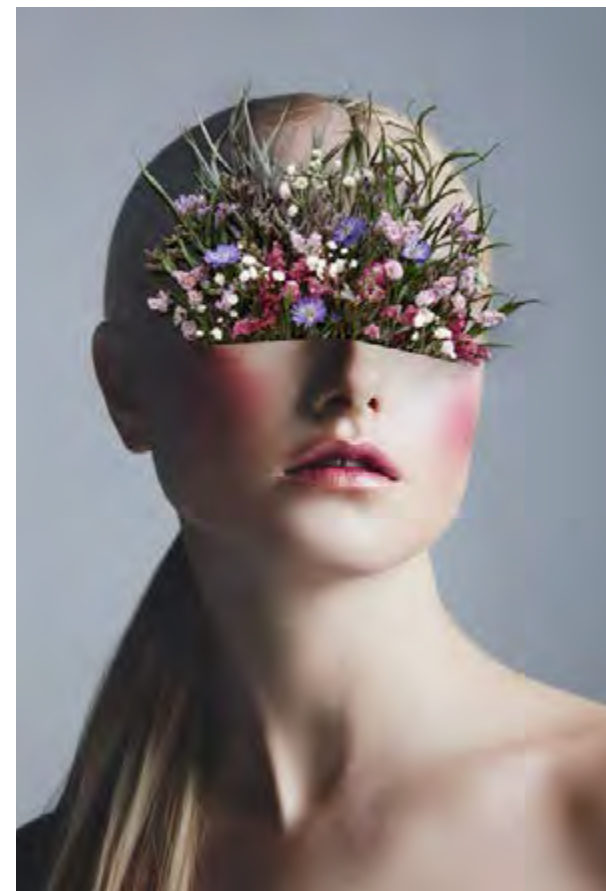
F

G



LIPS COLLAGE
#GI-815059920

C D E F G



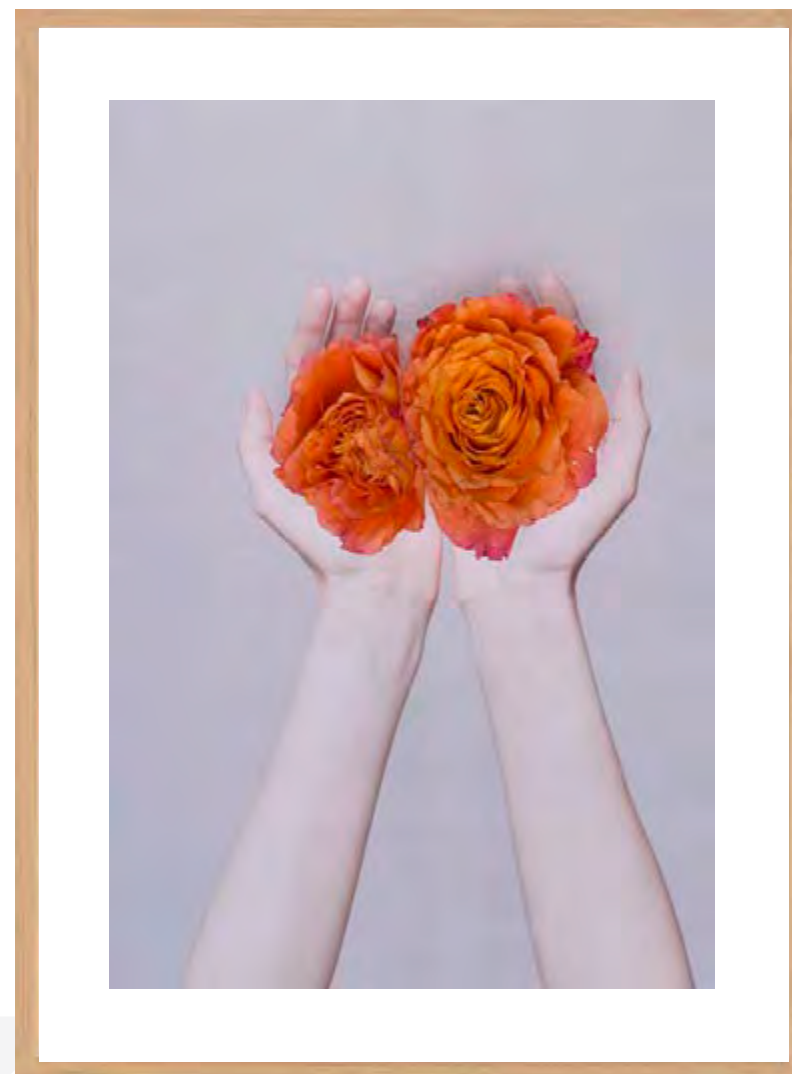
FLORAL COLLAGE 2
#GI-1028803148

C D E F G



FALLEN PETALS
#GI-645797919

C **D** **E** **F** **G**



ROSIE
#GI-645797949

C **D** **E** **F** **G**



HIMALAYAN PEAKS
#GI-941272366

C D E F G



PINK SUNSET
#GI-959762026

C D E F G



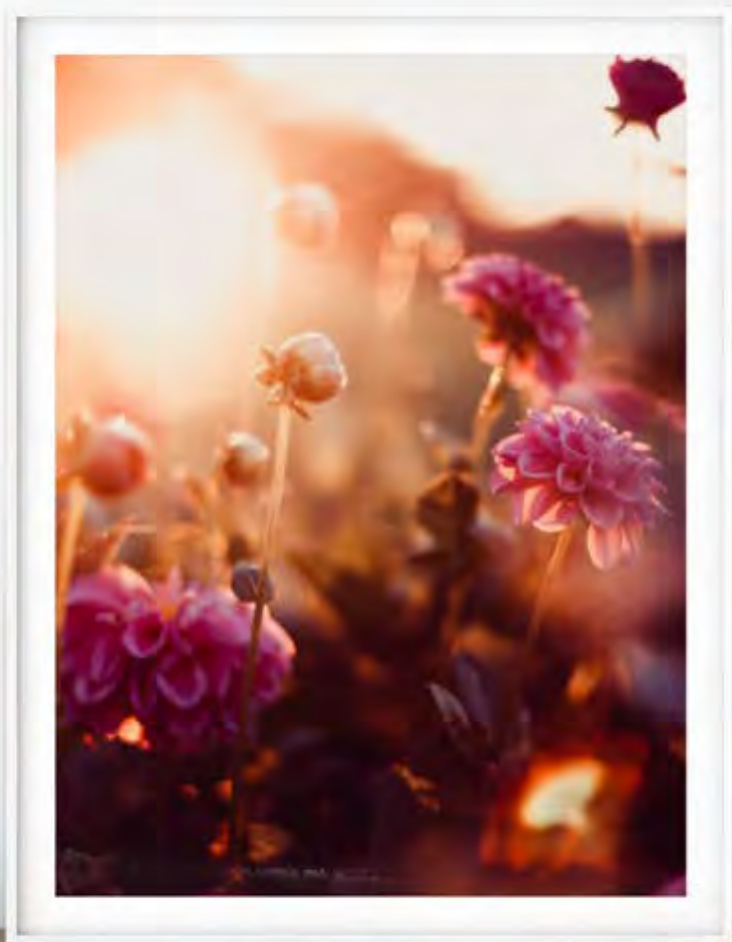
PINK PEONY
#GI-136125609

C D E F G



IN BLOOM III
#OE2-012-SW-030

C D E F G



◀ LEFT / SUNSET FLOWERS
#GI-880353376

RIGHT / ART DECO, HAWKE'S BAY
#GI-1015589810



EVENING FLOWERS
#GI-1045556916

C D E F G



FLAMINGO FEATHERS
#GI-961260070

C D E F G



FLAMINGO 2
#GI-963108422

C D E F G



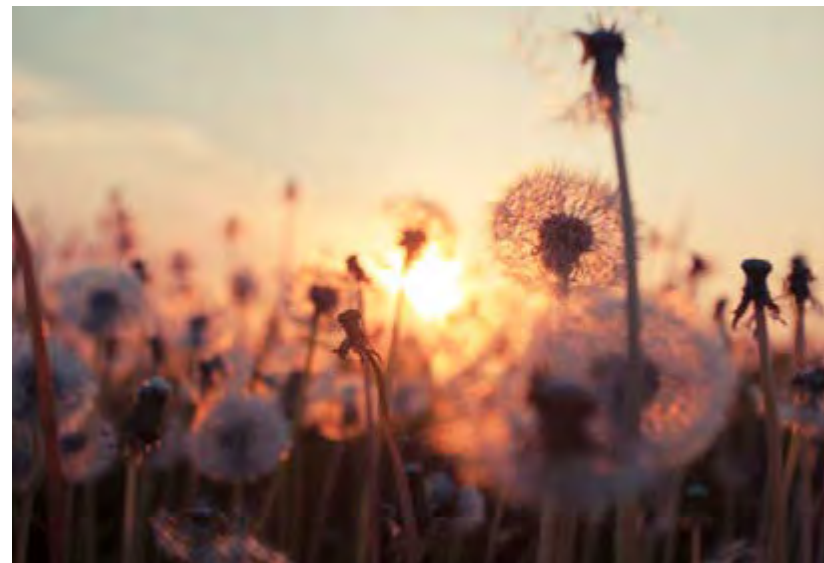
ANTELOPE CANYON
#GI-181371995

C D E F G



DAHILA
#GI-900818202

C D E F G



DANDELION AT SUNSET
#GI-956554914

C D E F G



BELLE II
#POD-JN189-A

CS DS ES FS



BELLE III
#POD-JN190-A

CS DS ES FS



ABSTRACT DREAM PINK GOLD
#POD-PW1373

CS DS ES FS GS



ABSTRACT DREAM PINK GOLD II
#POD-PW1374

CS DS ES FS GS



WEAVER 4
#OE-012-SW-004

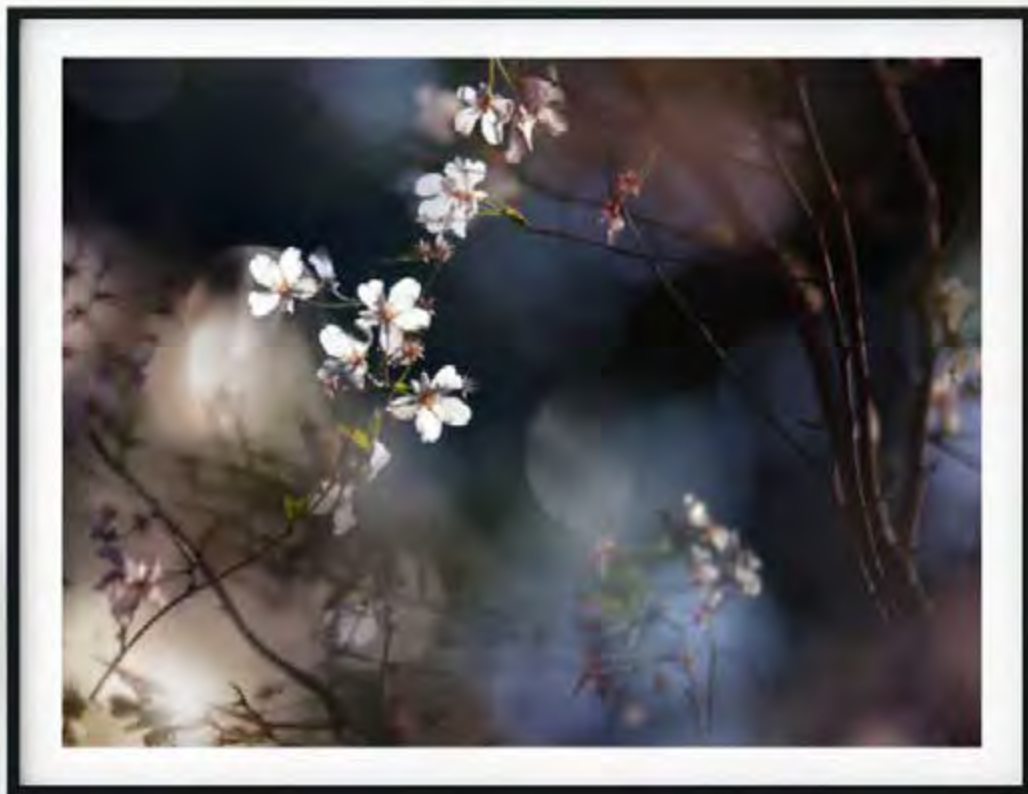
C D E F G



RESTFUL ROSE
#OE-012-GG-008

C D E F G





CHERRY BLOSSOM
#GI-813729892



MORNING SEA
#GI-915009552





PASTEL PETALS 1
#GI-515041491

C D E F G



PASTEL PETALS 2
#GI-515042673

C D E F G



PASTEL PETALS 3
#GI-515042395

C D E F G



PASTEL PETALS 4
#GI-515042727

C D E F G



ABSTRACT ROSES
#POD-PG104-A

CS DS ES FS GS



SWISH OF MAGENTA II
#POD-34927

CS DS ES FS GS



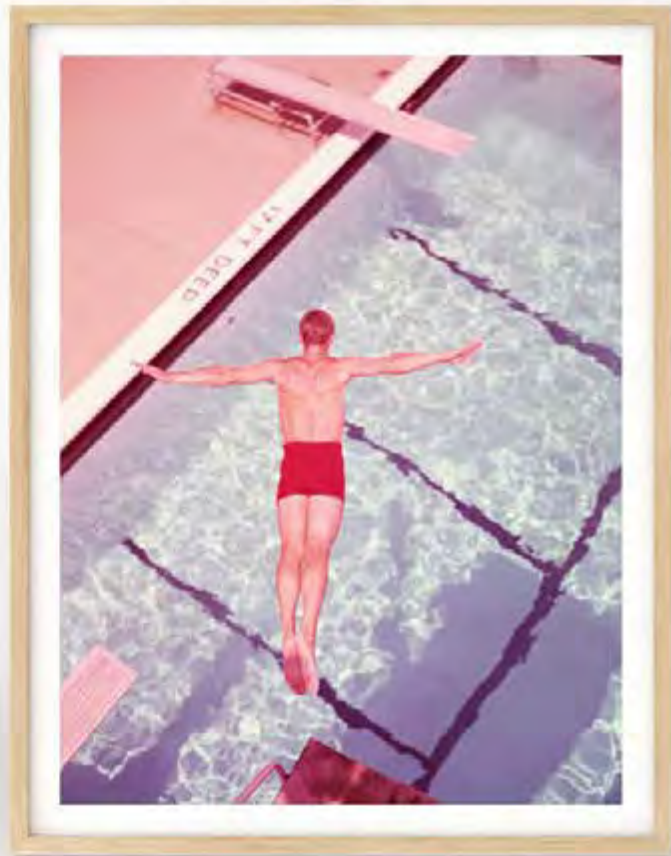
ECLIPSE
#POD-PG291-A

C D E F G



WARM GEOMETRIC
#POD-PG337-A

C D E F G



DIVE, CIRCA 1950
#GI-81773871

C D E F G



RETRO!
#GI-466043912

C D E F G



PASTEL CACTUS
#GI-624739000

CS DS ES FS GS



COLOURFUL MACAROONS
#GI-876190078

C D E F G



WHITE STUPAS
#GI-160869751

C D E F G



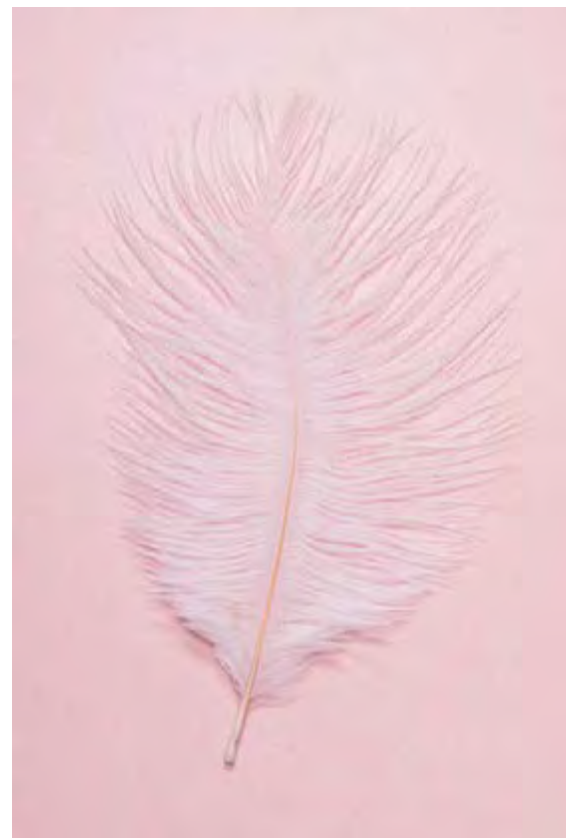
SAND TEXTURES
#GI-163227347

C D E F G



MOROCCAN WINDOW
#GI-114514593

C D E F G



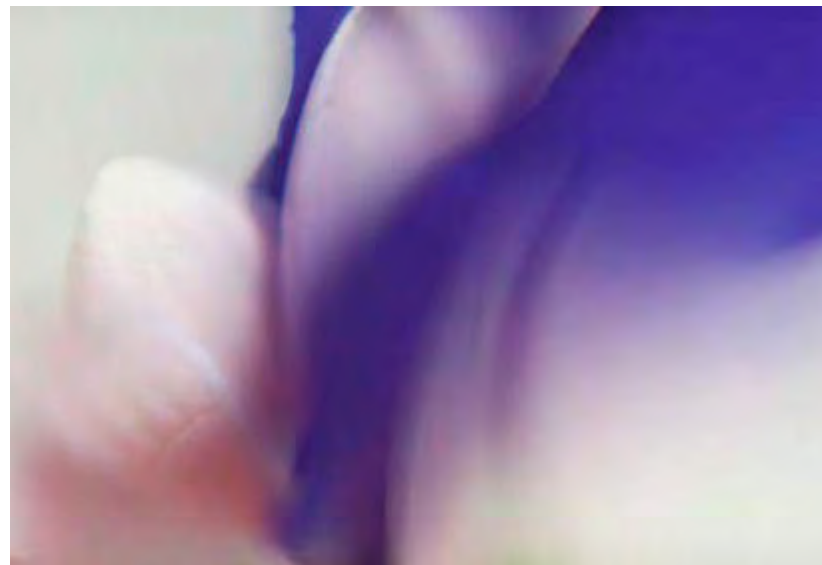
OSTRICH FEATHER
#GI-665042466

C D E F G



PASTEL PETALS 5
#GI-515042587

C D E F G



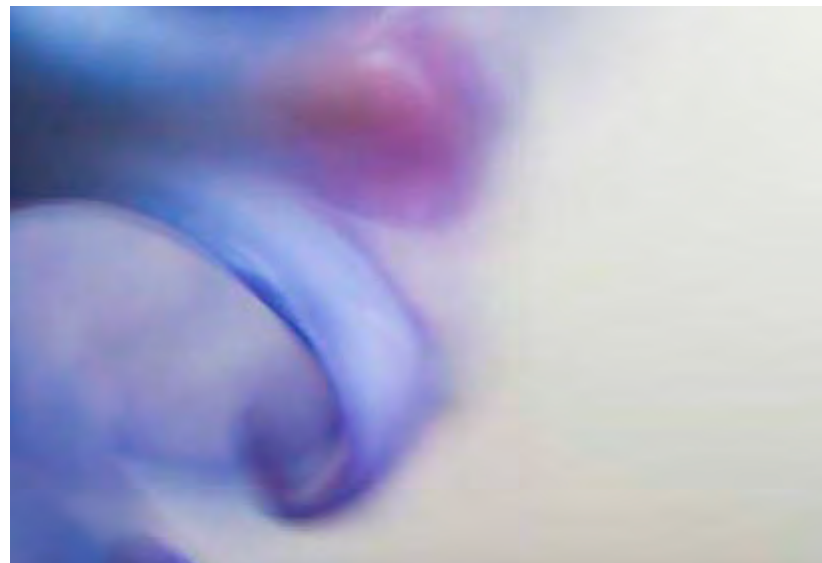
PASTEL PETALS 6
#GI-515043231

C D E F G



INDIGO PETALS 1
#GI-515041403

C D E F G



INDIGO PETALS 2
#GI-515042447

C D E F G



INDIGO PETALS 3
#GI-515041779

C D E F G



INDIGO PETALS 4
#GI-515043007

C D E F G





LIKE A HEARTBEAT (PART TWO)
#OE3-001-DM-005

C D E F G



LIKE A HEARTBEAT (PART THREE)
#OE3-001-DM-004

C D E F G



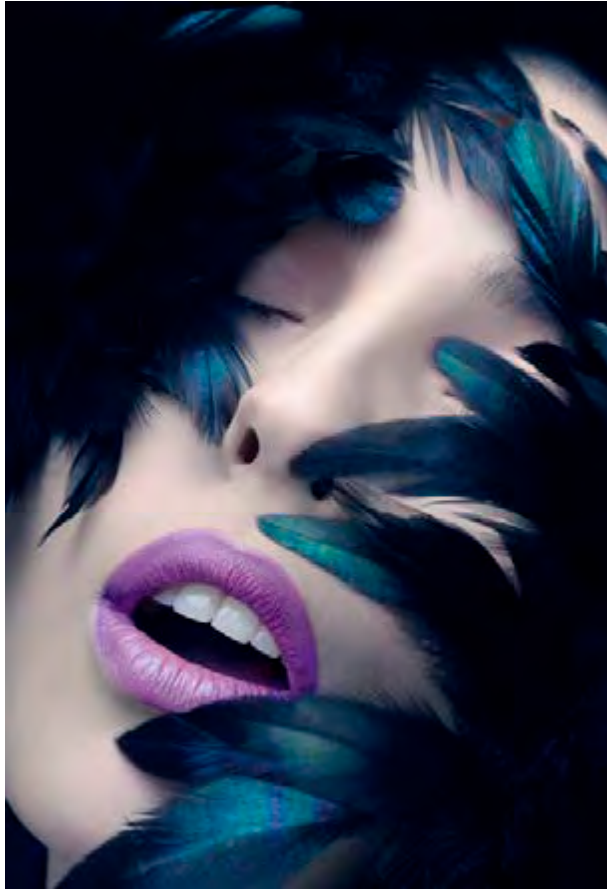
HAPPY PLACE (PART TWO)
#OE3-001-DM-002

C D E F G



HAPPY PLACE (PART THREE)
#OE3-001-DM-003

C D E F G



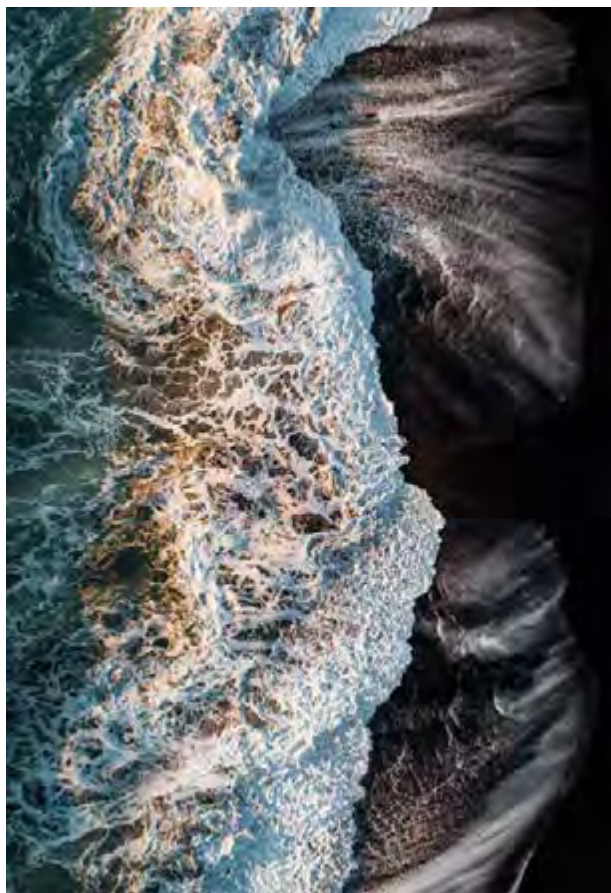
BEAUTY SHOT
#GI-172590550

C D E F G



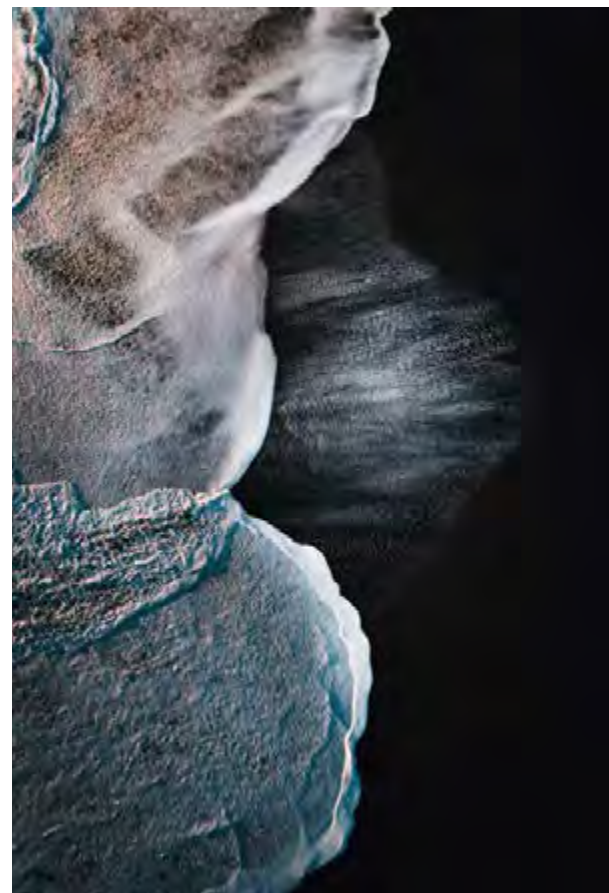
DUSTY BLUE FEATHERS
#GI-73552535

C D E F G



BLACK SAND BEACH 1
#GI-907794678

C **D** **E** **F** **G**



BLACK SAND BEACH 2
#GI-907800160

C **D** **E** **F** **G**



CINNABAR
#OE2-006-RR-003

C D E F G

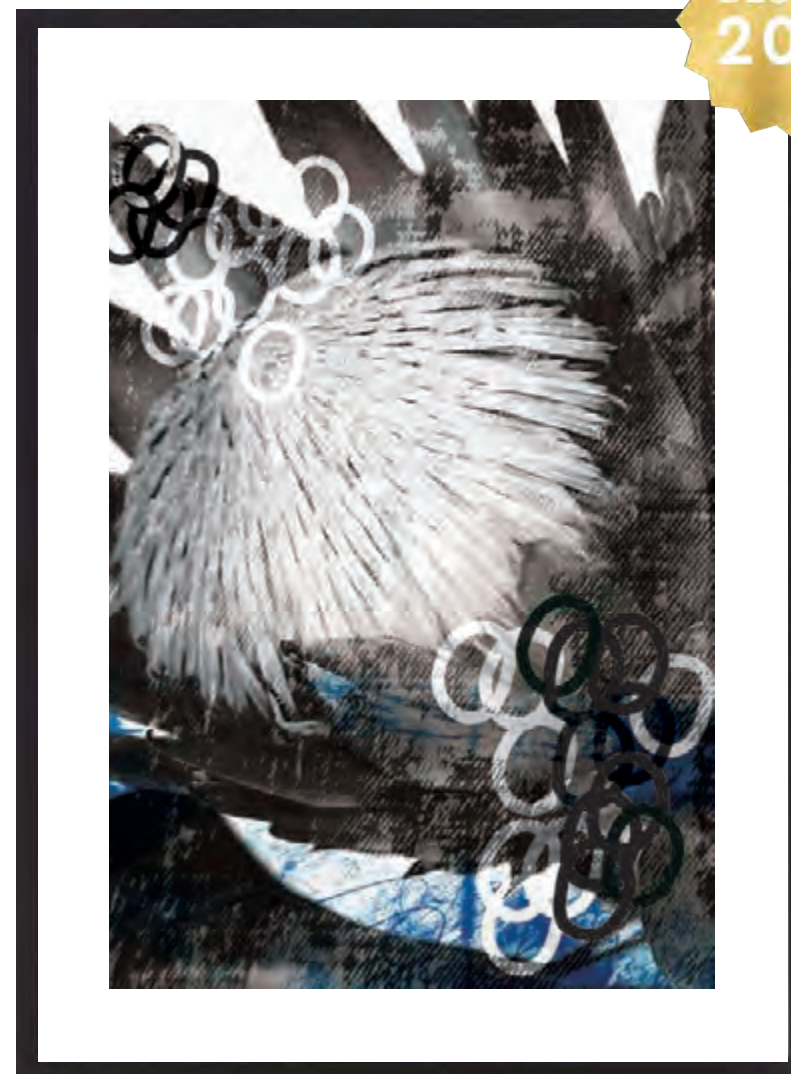


CITRINE
#OE2-006-RR-005

C D E F G



NATURALIS I
#OE2-012-002



NATURALIS II
#OE2-012-003





SHARK BAY 1
#GI-993597636

CS DS ES FS GS



BLUE DOOR
#GI-846499204

C D E F G



REGATTA IN THE INDIAN OCEAN
#GI-843346504

C D E F G



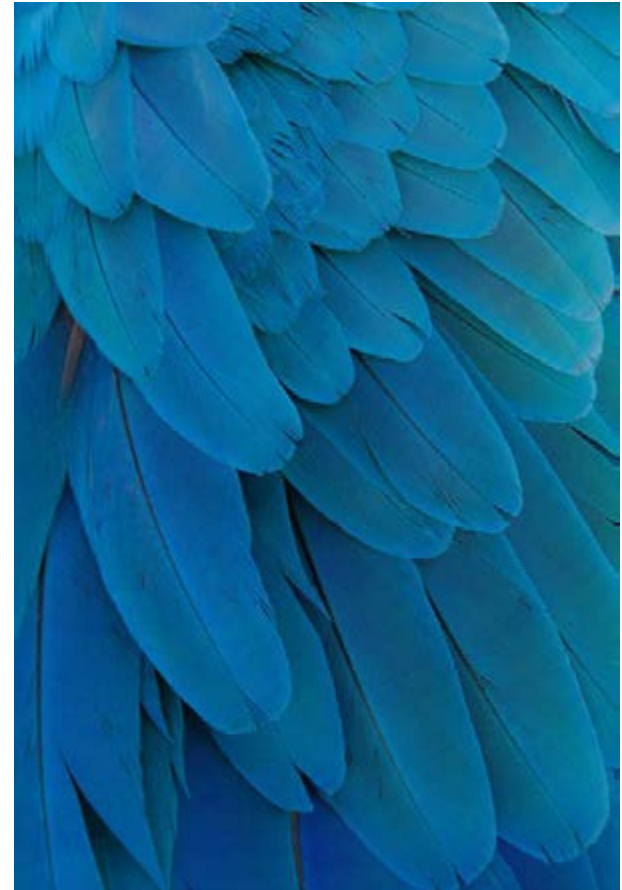
ROUGH SEA
#GI-846997536

C D E F G



RED-TAILED BLACK COCKATOO
#GI-481003725

C D E F G



BLUE PARROT FEATHERS
#GI-491691185

C D E F G



GUM NUT 1
#OE-020-92

C D E F G



GUM NUT 3
#OE-020-94

C D E F G



PERSE
#OE-020-102

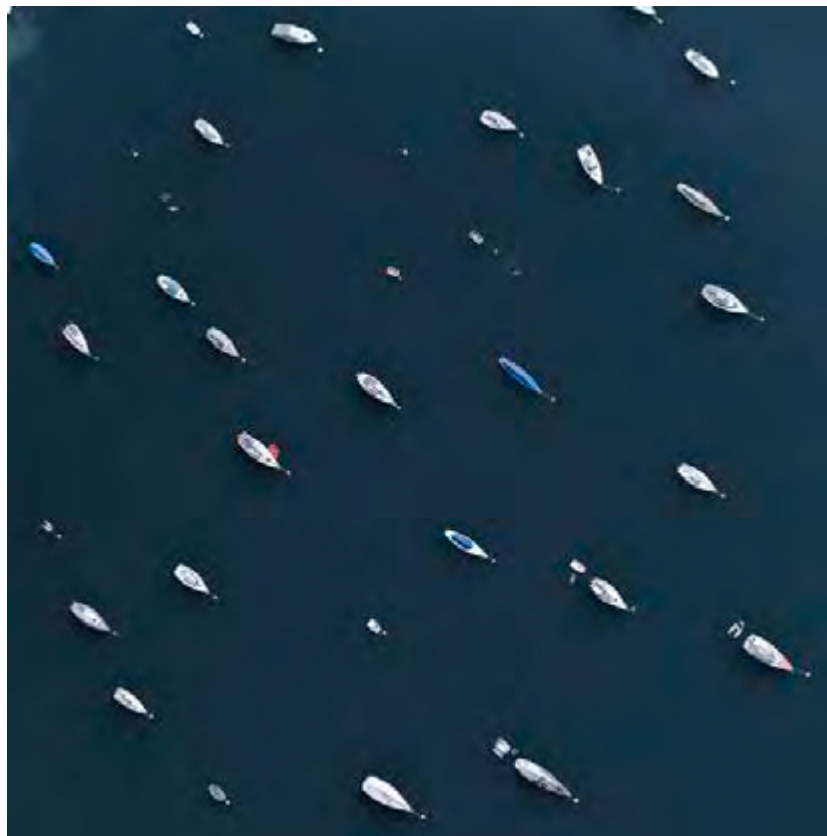
C D E F G



INDIGO BLOOM
#OE-020-103

C D E F G





SAILING BOATS
#GI-134310465

CS DS ES FS GS



WAVE, ICELAND
#GI-996792638

C D E F G



SANTA MONICA BEACH
#GI-145842570

C D E F G



NO-VACANCY
#GI-SB10065254E-001

C D E F G





SHARK BAY 2
#GI-993597666

C D E F G



SHARK BAY 3
#GI-993597694

C D E F G



REST IN ITS GLORY
#POD-C1237D

CS DS ES FS GS



TITLE
#GI-1024004666

C D E F G



WHAT IF III
#POD-15423

CS DS ES FS GS



BLUE AGAVE
#POD-C1234D

C D E F



HAWAII PALM
#GI-896712846

C D E F G

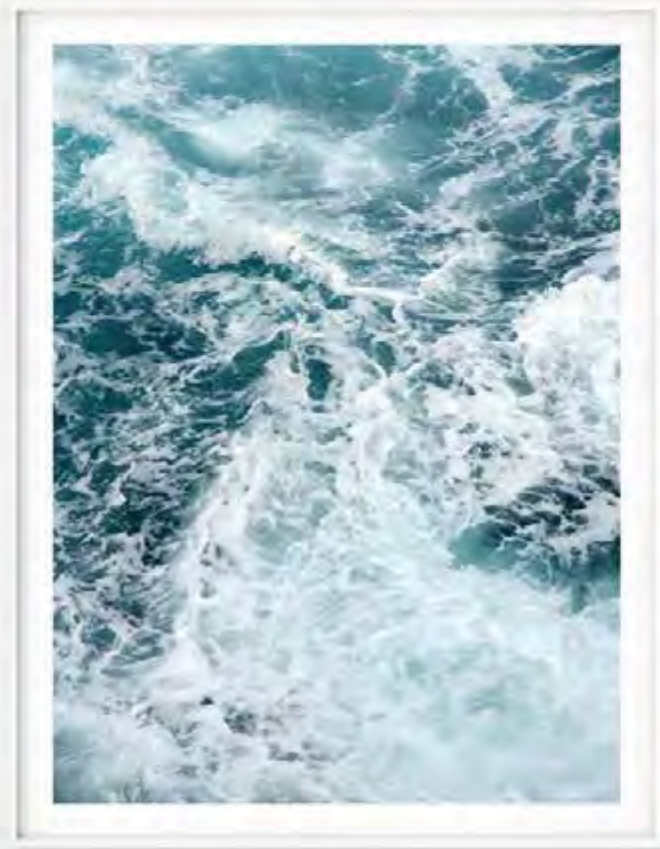


BARCELONA SPAIN
#GI-897780874

C D E F G



PORT DOUGLAS PALM
#GI-924379280



CHURNING SEASCAPE
#GI-1065733824





OIA SANTORINI GREECE
#GI-833247510

C D E F G



GOLDEN GATE BRIDGE, SAN FRANCISCO
#GI-822807798

C D E F G



MOUNTAIN PEAK
#GI-557532649

C D E F G



CANTERBURY PLAINS, NZ
#GI-605382171

C D E F G



STACCATO BLUE I
#POD-40738

CS DS ES



GOLDEN EDGE II
#POD-18012

CS DS ES FS GS



SAND LAKE SUMMER IV
#POD-40656

CS DS ES FS GS



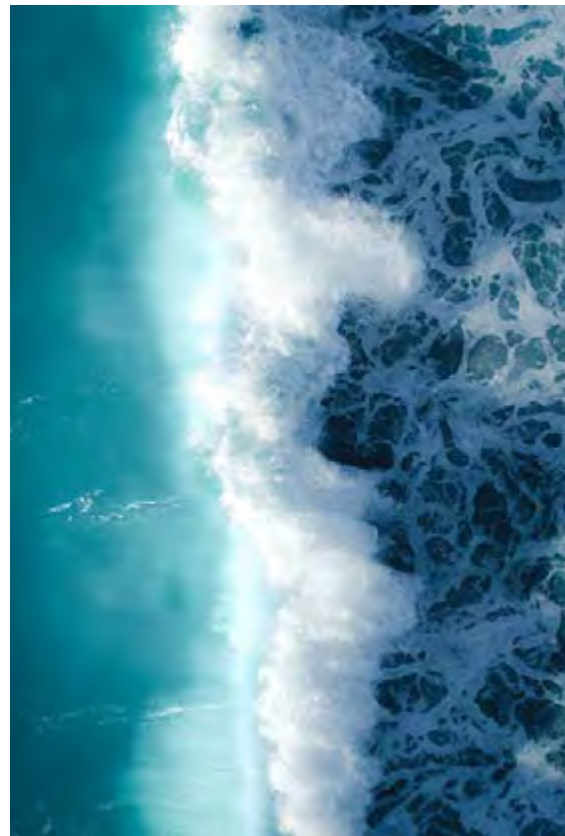
BLUE MOOD
#POD-40830

CS DS ES FS GS



BLUE PORTRAIT
#GI-1020080170

C D E F G



CRASHING WAVES
#GI-1011014146

C D E F G



BRONTE BEACH POOL
#GI-1059689284

C D E F G



CRYSTAL CLEAR
#GI-1008253880

C D E F G



RED HANDKERCHIEF
#GI-187276804

C D E F G



RETRO LIPSTICK
#GI-187100732

C D E F G



RETRO PORTRAIT
#GI-187100769

CS DS ES FS GS



EMBRACE
#GI-469835850

C D E F G





WATERMELON ON BEACH
#GI-119678249

C D E F G



FUN BY THE BEACH
#GI-120987936

C D E F G



RETRO BOARDS
#GI-119678445

CS DS ES FS GS



SUMMER DAYS
#GI-119678250

C D E F G



RETRO BOARDS 2
#GI-119678776

CS DS ES FS GS



RETRO BOARDS 3
#GI-119678235

C D E F G





MOUNTAIN MIST TEAL 1
#POD-KA-SQ-793C

CS DS ES FS



BLUE DANCE II
#POD-40328

CS DS ES FS GS



TRI MONTAGE
#POD-40329

CS DS ES FS GS



SCENT OF SUMMER
#POD-40827

CS DS ES FS GS



ODE TO ROTHKO (PART TWO)
#OE3-001-DM-006

C D E F G



OCEANS (PART TWO)
#OE3-001-DM-009

C D E F G



LISTEN TO THE WIND BLOW (PART TWO)
#OE3-001-DM-008

CS DS ES FS GS



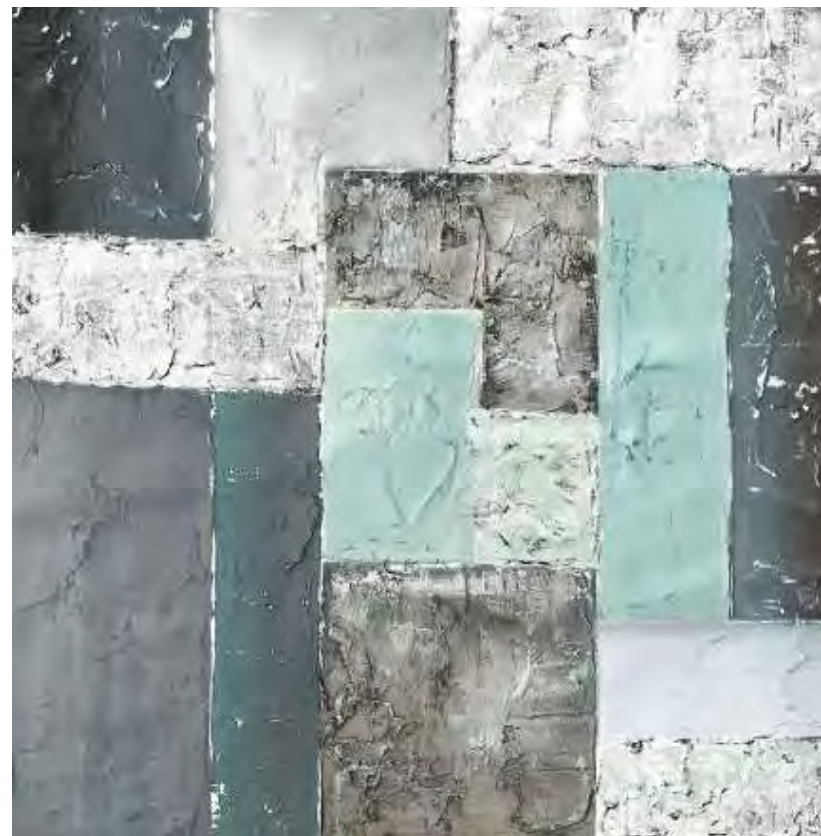
OCEANS (PART THREE)
#OE3-001-DM-010

C D E F G



QUADRANGLE I
#POD-62069

CS DS ES FS GS



QUADRANGLE II
#POD-62070

CS DS ES FS GS



DISTRESSED LEAVES
#GI-614044384

C **D** **E** **F** **G**



WATERCOLOUR FLOWER
#GI-1032236364

C **D** **E** **F** **G**



SAGE AND LAVENDER PEONIES II LIGHT
#POD-48746

CS

DS

ES



SAGE AND LAVENDER PEONIES III LIGHT
#POD-48747

CS

DS

ES



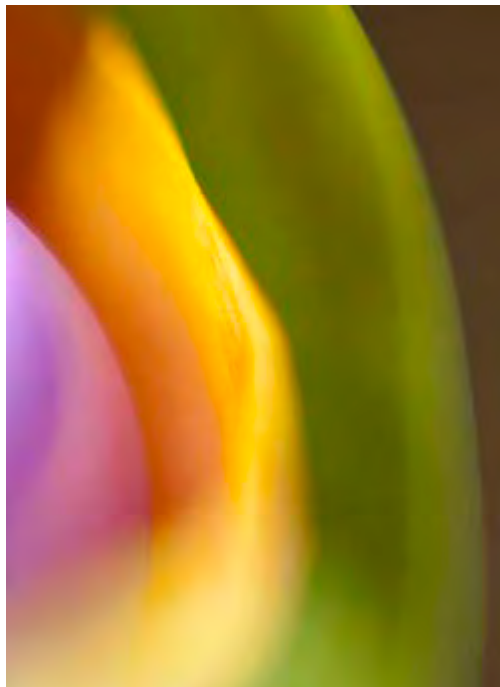
VERTE VIEW
#POD-40353

CS DS ES FS GS



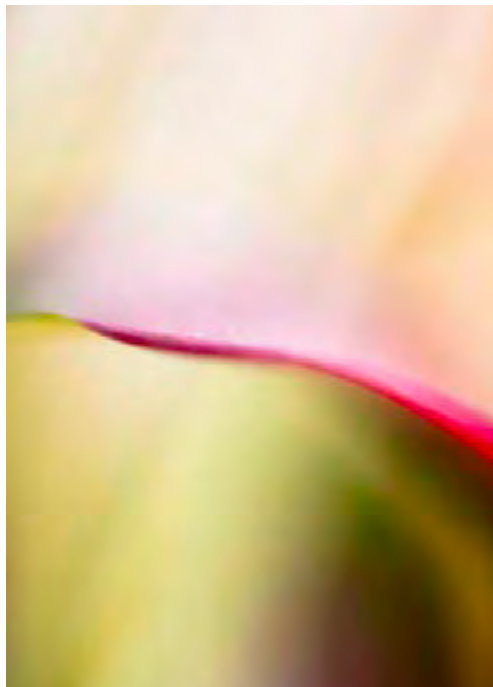
GOLDEN POSSIBILITIES
#POD-PWP132

CS DS ES FS GS



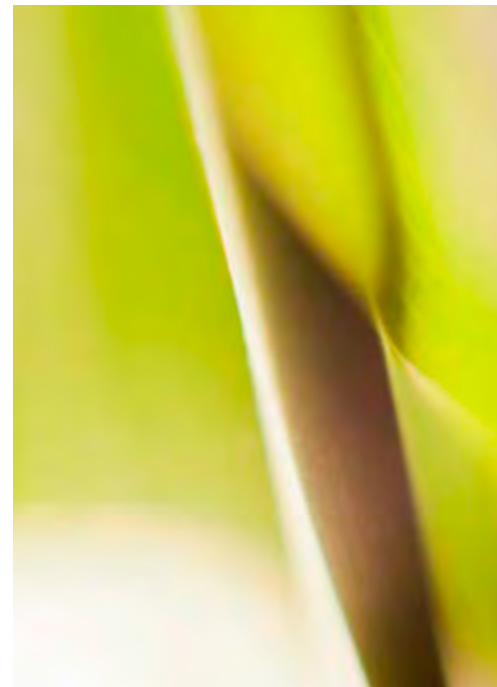
REFRACTION 1
#GI-145065324

C D E F G



REFRACTION 2
#GI-145065326

C D E F G



REFRACTION 3
#GI-145065335

C D E F G



EXOTIC FLOWER IV
#POD-48033

CS DS ES FS GS



DAISY
#GI-1004082646

C D E F G



HARVEST 1
#OE3-001-002

CS DS ES FS GS



HARVEST 2
#OE3-001-003

CS DS ES FS GS



HARVEST 3
#OE3-001-003

CS DS ES FS GS



FEMALE COLLAGE
#GI-1028803136

CS DS ES FS GS



MORNING DEW 2
#GI-1025347288

C D E F G



PALMS II BRIGHT
#POD-48328

C **D** **E** **F**



MONSTERA DELICIOSA
#GI-844543244

C **D** **E** **F** **G**



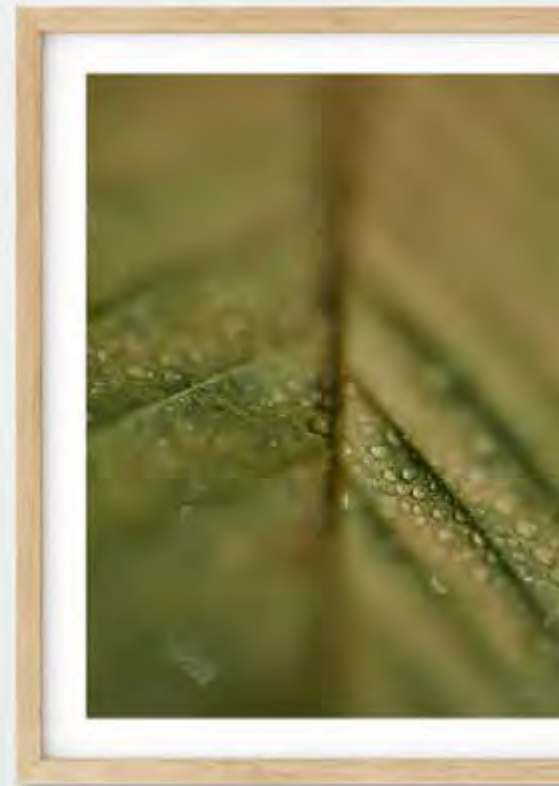
WATERFALL, ICELAND
#GI-874651224



MALE COLLAGE
#GI-1028803134



MORNING DEW 1
#GI-1025347268



MORNING DEW 1
#GI-1025347268



◀ BLURR
#GI-1026709732



LEAF 1
#OE-009-MJ-013

C D E F G



LEAF 2
#OE-009-MJ-014

C D E F G



PASTEL FIELD
#GI-89837889

C D E F G



BEACH HUTS
#GI-175962955

C D E F G



SANDY BEACH
#GI-77658528

C D E F G



PALM TREES
#GI-746029527

C D E F G



VEIL
#GI-862699156

C D E F G



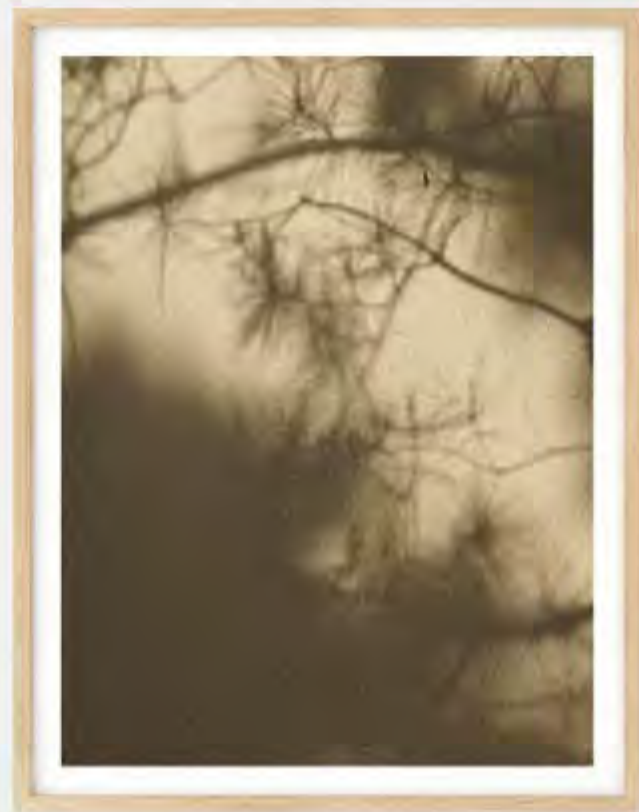
WREATH
#GI-864950814

C D E F G



BARLEY
#GI-585554066

C D E F G



SHADOW
#GI-743696477

C D E F G





DIADELPHIA DECANDRIA
#GI-614310402

C D E F G



GYNANDRIA MONANDRIA
#GI-614310344

C D E F G



POLYANDRIA MONOGYNIA
#GI-614310284

C D E F G



ARCTOSTAPHYLOS TOMENTOSA
#GI-614310454

C D E F G



GYNANDRIA MONANDRIA
#GI-614718764

C D E F G



ERYTHRONIUM GRANDIFLORUM
#GI-614718412

C D E F G



EMPIRE STATE
#GI-107700799

C D E F G



SPANISH ARCHITECTURE
#GI-1025835292

C D E F G



PEAFOWL WINGS 2
#GI-1077102822

C D E F G



PEAFOWL WINGS 2
#GI-1077102830

C D E F G



SUBTLETY 1
#GI-545483872

C D E F G



PASTEL BLOSSOM
#GI-954214714

C D E F G





VINTAGE BOKEH
#GI-844124030

C D E F G



APPALACHIAN TRAIL
#GI-872250140

C D E F G



FLINDERS DUNES
#GI-175166975

C D E F G

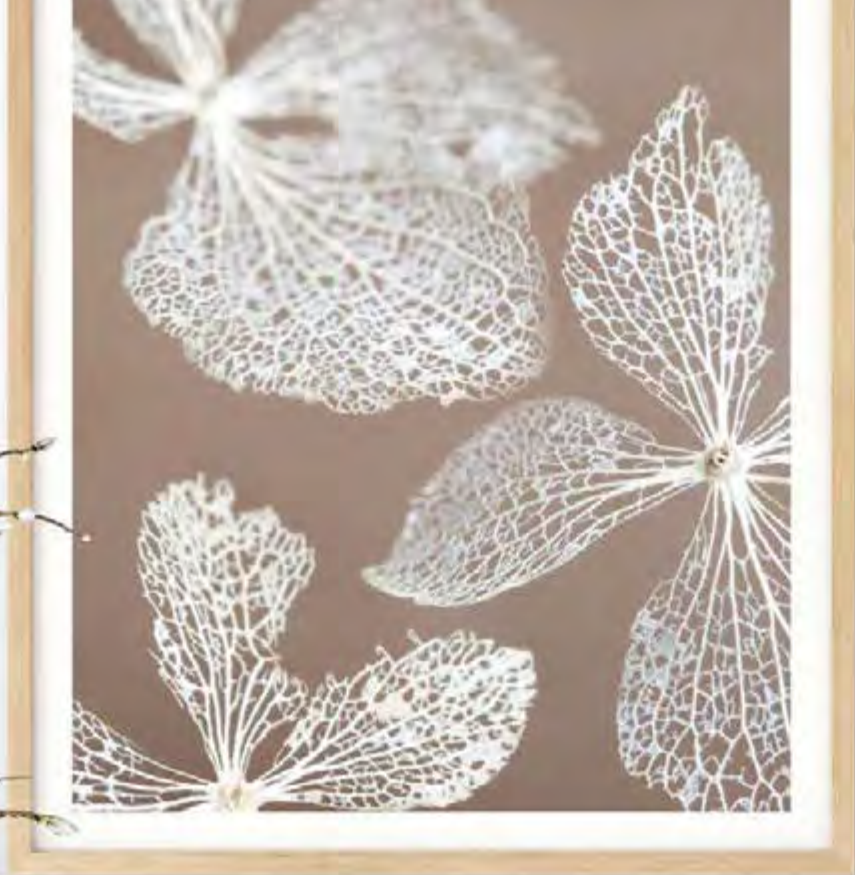


MARRAKESH LIGHT
#GI-847070076

C D E F G



HYDRANGEA SKELETON 1
#GI-694095824

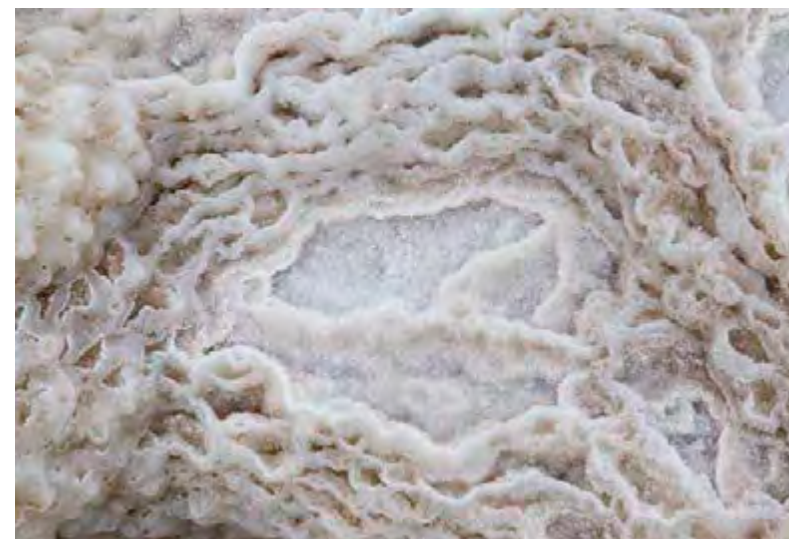


HYDRANGEA SKELETON 2
#GI-694095840



DEWDROPS
#GI-200421757-001

C D E F G



DEAD SEA
#GI-904224098

C D E F G



WILDFLOWERS
#GI-1033810704

C D E F G



AUTUMN PINE
#GI-813570334

C D E F G



MIDTOWN MANHATTAN
#GI-922693572

C D E F G



DESERT ROAD
#GI-988045430

C D E F G



SEASHELL COSMOS I RED AND ORANGE
#POD-31299

CS DS ES FS GS



SEASHELL COSMOS II RED AND ORANGE
#POD-31300

CS DS ES FS GS



GILDED ROCKING MOROCCAN
#POD-16837

CS DS ES FS



GILDED TRELLIS I
#POD-16838

CS DS ES FS



MOROCCAN DOOR
#GI-909220086

C D E F G



VINTAGE CASES
#GI-539670187

C D E F G



SEASHELLS
#GI-957801688

C D E F G



CLASSIC MOTORCAR
#GI-915260470





CORAL 1
#GI-1028070896

C D E F G



CORAL 2
#GI-1028070898

C D E F G



FOGGY SUNRISE
#GI-918484266

C D E F G



PALM TREE SILHOUETTE
#GI-72084411

C D E F G



GOLDEN FEATHER
#GI-636366438

C D E F G



FLOWER PETALS
#GI-562051281

C D E F G



GOLDEN BOKEH
#GI-1057735768

C D E F G



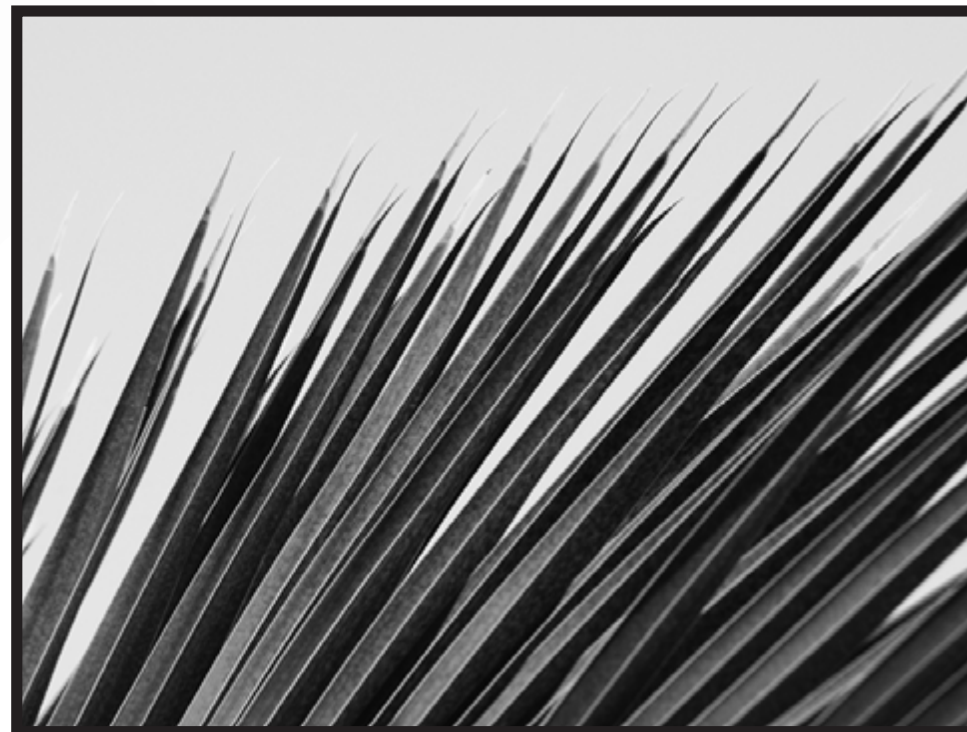
SOFT FEATHERS
#GI-826147314

C D E F G



HORSE
#GI-566558855

C D E F G



PALM LEAF
#GI-1050930466

C D E F G



BLACK AND WHITE FLOWER
#GI-869730414



BOUQUET OF PINK PEONIES
#GI-917874382

C D E F G

C D E F G



VEINS
#GI-1056665128

C D E F G



PALM TREES
#GI-150639121

C D E F G



PALM TWINS
#GI-1005900282

C D E F G



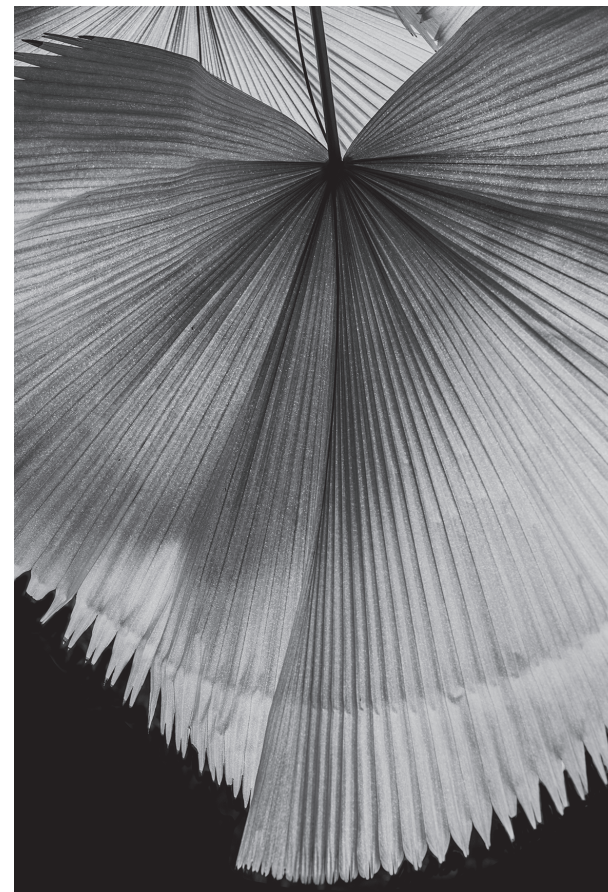
SKOGAFOSS WATERFALL, ICELAND
#GI-644066790

C D E F G



TULIPS
#GI-951467034

C D E F G



SUNLIT PALM LEAF
#GI-904238436

C D E F G



GEOMETRIC ARCHITECTURE
#GI-1040417914

C D E F G



CALLA LILY
#GI-743696183

C D E F G

GALLERY ONE

Gallery One is one of Queensland's leading contemporary fine art galleries. Based on the Gold Coast, Gallery One represents collectable and established multi award-winning Australian Artists, including Archibald, Wynne and Sulman winners and finalists

Website: www.gallery-one.com.au
Phone: 07 5528 0110
Address : 02/107 Ferry Rd, Southport 4215



James Ainslie

Crispin Akerman

Wendy Arnold

Andrew Baines

Min-Woo Bang

Kate Bergin

Cynthia Breusch

Claire Bridge

Mel Brigg

David Bromley

Mike Chavez

Michael Davis

Ken Done

John Earle

Nathan Feldman

Stephen Glassborow

Emma Hack

Paul Haggith

Steve Harris

Jonathon Hayde

Dean Home

Pamela Honeyfield

Juli Hutchings

Ken Johnson

Fiona Kennedy-Altoft

Kathrin Longhurst

David Mackay Harrison

Suey McEnally

Christopher McVinish

Craig Parnaby

Stanislas Piechaczek

Jennifer Riddle

Craig Ruddy

Leisa Russell

Rosetta Santucci

Stephanie Tetu

Goompi Ugerabah

Diana Watson

Anita West

Michael Whitehead



Established on the Gold Coast, Australia in 1996, Corporate Art is known for cutting-edge art consultancy with hotel and resort clients both nationally and internationally. Corporate Art offers a full art consultancy service with access to tailor art packages from the affordable options right through to high-end collectable solutions.

Website: www.corporateart.com.au

Phone: 07 5576 8888

Address : 13/110 Kortum Drive, Burleigh Heads 4220



Sofitel Darling Harbour, SYDNEY

The Star Casino, SYDNEY

Oxley and Stirling, BRISBANE

Novotel Rockford, SYDNEY

Aloft, PERTH

Akira, BRISBANE

Breeze, SUNSHINE COAST

The Melbourne Residences, BRISBANE

One & Only, HAYMAN ISLAND

Tryp Hotel, BRISBANE

Wyndham Hotel, SURFERS PARADISE

Holiday Inn, PENRITH

Mercure, PARRAMATTA

Regis Aged Care, BRISBANE

Etihad Towers Abu Dhabi, UAE

Palazzo Versace, MAIN BEACH

Soul, SURFERS PARADISE

Holiday Inn, SURFERS PARADISE

Sheraton Mirage, SURFERS PARADISE

Q1, SURFERS PARADISE

Bel Air, BROADBEACH

Platinum on the Beach, SURFERS PARADISE

Chevron Renaissance, SURFERS PARADISE

Deep Water Point, LABRADOR

Aria, BROADBEACH

Seaforth, ALEXANDRA HEADLAND

Peppers Resort and Spa at Salt, KINGSCLIFF

Mantra on Salt Beach, KINGSCLIFF

Ettalong Beach Resort, ETTALONG BEACH

Ramada, PELICAN WATERS

Cafe 21 Conrad Treasury, BRISBANE

Marco Polo Conrad Treasury, BRISBANE

Daydream Island, WHITSUNDAYS

Sheraton Hotel, NOOSA

Cairns International, CAIRNS

The Arbour on Grey II, BRISBANE

Savannah, BROADBEACH

Seaworld Nara Resort Hatsuhana, MAIN BEACH

Hyatt Regency, COOLUM

Radisson Resort, PALM MEADOWS

Calypso Plaza, CAIRNS

The Westin, BRISBANE

FINEPRINT^{co}

Enquires and Orders

orders@fineprintco.com

fineprintco.com

+61 7 5576 8888

*“... unique imagery
representative of the
years’ movements and
trends within the field
of art and design...”*

FINEPRINT^{co}

Enquiries and Orders

orders@fineprintco.com

www.fineprintco.com

+61 7 5576 8888

Alicia Beech
Amanda Slade
Andrew Dennis
Anita Vincze
Art Slave
Asher Cobb
Charles Blackman
Christopher McVinish
CJ
Corban Renouf
Cynthia Breusch
Dan Mason
David Bromley
Diana Watson
Eva Bane
Goompi Ugerabah
Grace Garrett
Fran Miller
Francesca Owen
James Ainslie
Juli Hutchings
Jo Olive
John Kaye
John Santucci
Kate Bergin
Katrina Read
Kyle Jenkinson
Lara Timireva
Lea Scott
Leans
Malin
Matt Johnson
Marilyn Wallace-Mitchell
Mel Brigg
Michael Davis
Michael Whitehead
Pamela Honeyfield
Rebecca Cunningham
Rosetta Santucci
Ross Spencer
Sean & Kat
Shelli Bankier
Stacey Weaver
Stephanie Têtu
Trent Szmolnik